



# **WCRA NEWS**

## **APRIL 2018**

**ANNUAL GENERAL MTG.**  
**MARCH 27 AT 19:30**  
**NEW—TELEGRAPH**  
**MEMORIAL PARK**



## GENERAL MEETING

**The Annual General Meeting** of the WCRA will be on Tuesday, March 27, 2018 at Rainbow Creek Station in Burnaby, Willingdon and Penzance, at 1930 hours. The regular General Meeting will follow the AGM.

Please make every effort to attend this important annual meeting.

Entertainment will be a video of snow clearing in Rogers Pass—as time allows.

## ON THE COVER

Climbing north out of Williams Lake, BC a CN freight has SD70M-2 units 8881 / 8957 pulling hard towards the Deep Creek bridge and points north. (Don Evans, March 7, 2018)

## APRIL CALENDAR

- Friday, April 6—Newsletter deadline for the April issue of WCRA News
- **West Coast Railway Heritage Park open daily 1000 to 1600**
  - Bill Miner Escape Room open by reservation every Friday, Saturday and Sunday
- Wednesday, April 18 to Sunday, April 22—Squamish Homeshow—CN Roundhouse & Conference Centre
- Tuesday, April 24—WCRA General Meeting, 1930 k, Rainbow Creek Station
- Friday, April 27 and Saturday, April 28—Squamish Refresh Market—CN Roundhouse & Conference Centre
- May 4, 5 and 6—Railway Modelers Meet info at <[railwaymodellersmeetofbc.ca](http://railwaymodellersmeetofbc.ca)>

The West Coast Railway Association is an historical group dedicated to the preservation of British Columbia railway history. Membership is open to all people with an interest in railways past and present. We are a non-profit British Columbia society, registered as a Canadian charity. Membership prices are as follows, **Please note that GST must be added to all fees:**

Senior \$50 (\$52.50), Individual \$55 (\$57.75), Family \$65 (\$68.25) **E Members (electronic newsletter only) are \$35 (\$36.75) Senior, \$40 (\$42.00) individual and \$50 (\$52.50) family.** Other categories are:

- Junior Member (age 18 and under ) \$ 30 (\$31.50)
- Sustaining Member \$100 (tax receipt) **plus** membership type regular fee
- Life Membership \$700 (\$735) individual life / \$1,200 (\$1,260) family life

All memberships include the monthly newsletter, Heritage Park admission (except Special Events), mini rail rides and discounts on food and merchandise. The Association holds a monthly meeting on the last Tuesday of the month at 1930 hours in Burnaby at Rainbow Creek Station in Confederation Park. Apply through **[www.wcra.org](http://www.wcra.org)** or mail to WCRA, PO Box 2790 Stn. Term., Vancouver, B.C., V6B 3X2.

# ASSOCIATION NEWS

## FROM THE FEBRUARY MEETING

Chair **Craig McDowall** called the meeting to order at 19:35K with 15 voting members, 3 non-voting members, no staff and 3 guests. This did not constitute a quorum.

Recording Secretary – **William Johnston**

## COMMITTEE REPORTS

**FINANCE – Bob Philip** updated our financial situation. Interest is now being paid on debentures as our finances slowly improve. A pitch was made to support our foundation, the interest on which greatly assists our activities.

**OPERATIONS – Gordon Bell** reported, via **Craig**, about how well the conference centre is getting booked up. Most importantly selling buyout fees have increased from \$2,000 to \$2,500 per use. The park reopens March 15<sup>th</sup> for the 2018 season.

- Advertising will be increased to drive up attendance numbers and encourage bookings.
- Volunteers are needed for all areas of the operation. Namely: heritage interpreters, mini-rail operators, pump car and speeder operators, servers, greeters, gift shop and guest services.
- Four major events were held in January and February catering to over 250 guests. Looking forward, almost a dozen events will be held at the park before June 30<sup>th</sup> including 2 major conferences.

**FUNDRAISING – Ken Tanner** reported, via **Craig**, on the progress of grant applications. We concluded 2017 at 92% of our budgeted fundraising target and to date in 2018 we have exceeded the 1/3<sup>rd</sup> point of our full year fundraising target of \$661,000.

**COLLECTION –** Nothing to report

**LOCOMOTIVE 374 – George Game.** We are pleased to welcome 2 new volunteers to take Wednesdays upon the passing of **John Lighthall**. They are **Nicole Bleau** and **Cristina Jacob**. They have undergone training and are a welcome addition to our crew.

**OTHER BUSINESS – Bill Johnston** made a plea for volunteers to assist with the operations required for Western Rails, March 17<sup>th</sup> and 18<sup>th</sup>. Signup sheets were available.

**NEW BUSINESS -** A suggestion from the floor was made to possibly name a coach after recently deceased former premier Dave Barrett. He was largely responsible for supporting the Royal Hudson excursion to Squamish (along with Grace McCarthy.)

**EVENTS CALENDAR –** Read from the Newsletter.

The most urgent is Western Rails March 17<sup>th</sup> – set up - and the 18<sup>th</sup> open to public.

- Please save the date Saturday June 23<sup>rd</sup> for the WCRA “Summer Shaker” party and official launch of new summer offerings at the park. Details coming.

## TRACKSIDE REPORTS

**Bill Marchant** contributed items of interest in his usual entertaining fashion.

**Ryan Cruickshank** gave a brief show and tell of tinsplate track switches and turntable.

**50/50** draw was held.

**ENTERTAINMENT** - Supplied by **Joe Naismith**: a video featuring ATSF locomotives, in particular the fleet of 2-10-4's that were in wide use up until the 1950's.

## **NEW MEMBERS**

We welcome Madelyn Switzer and family of Burnaby to membership (J.D.)

## **PLEASE RENEW YOUR MEMBERSHIP**

If your label reads 02/28/18 it is time to renew your membership.....if it reads 11/30/17 this is your last issue of WCRA News. We need all of you as members, please renew today.

## **WCRA TRIVIA #350 - By Ryan Cruickshank**

On the first of January, 1923 Britain's railways amalgamated into four large groups that lasted until they were nationalized into British Railways in 1948 and later privatized starting in 1994. During 1923-1948 what were Britain's *Big Four* railways?

(Answer on page 19)

## **THANK YOU VOLUNTEERS for DONATED EXPENSES**

Again this year, in addition to giving their time, the WCRA Volunteers generously donated back to the Association mileage and in-kind travel expenses valued at over \$68,700 in return for a Charitable Tax receipt.

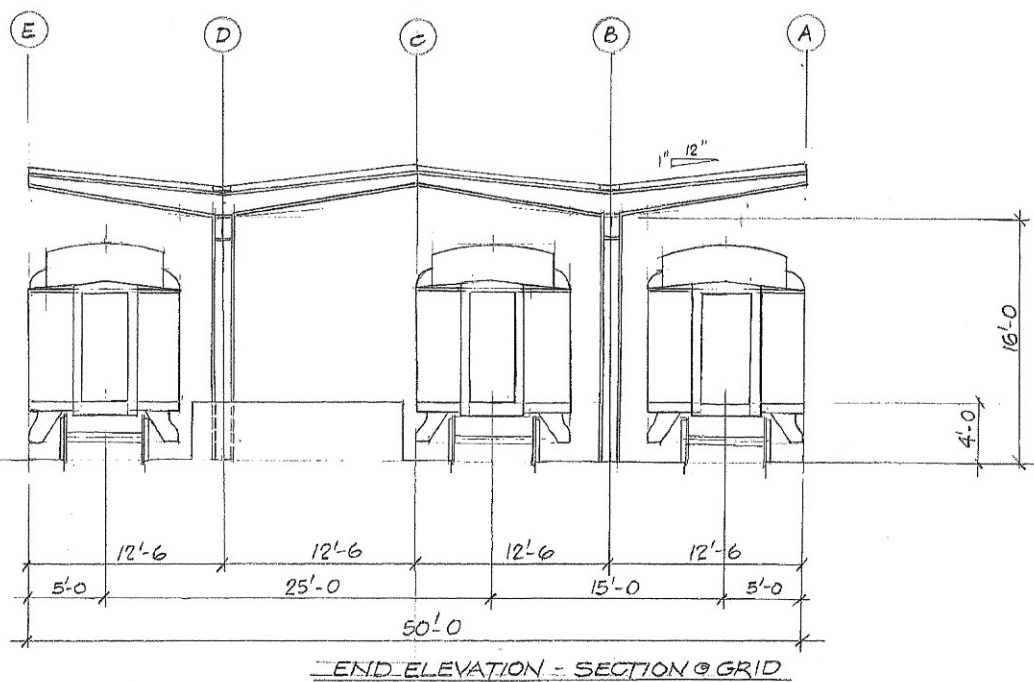
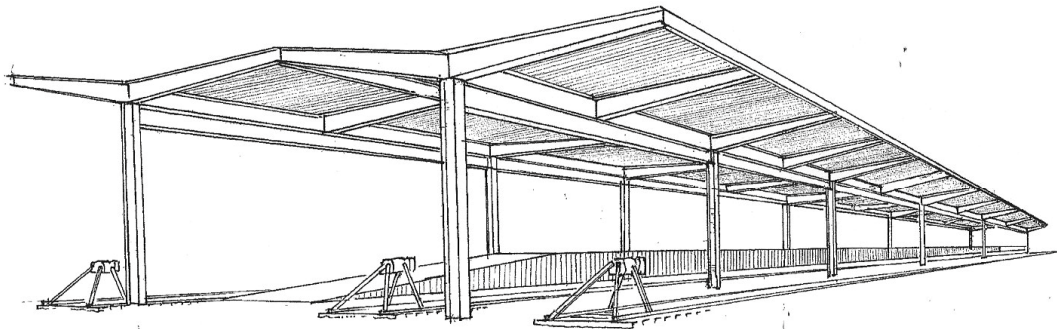
The 2017 Books are closed and Tax Receipts issued, which only leaves me one task - the most gratifying one ... acknowledging the donors. A heartfelt thanks to all of you ... **Keith Anderson; Anna Bentley; Lloyd Black; Lorraine Black; Rene Brisette; Phil Breden; Tom Bruvall; Jenn Chisholm; Arlene Climie; Bob Cochrane; Richard Courage; John Cowan; Judy Crowston; Roy Crowston; Ryan Cruickshank; Jeremy Davy; John Day; Lisa Flatla; Donna Fourchalk; Gordon Frank; Bonnie Game; George Game; Bob Gordon; Gordon Hall; Trudy Hellenes; Bob Hunter; John Jellis; Bill Johnston; Lynne Kinnell; Michael Lancaster; John Lighthall; Mike Lloyd; Blanche Lucyk; Robert MacBeth; Bill Marchant; Krishan Mayer; Ann McCartney; Craig McDowall; Mike McGaw; Bill Mellors; Klaus Michel; Kyle Miller; Joe Naismith; D'Arcy Nelson; Tomo'o Oshikawa; Tom Pruden; Greg Robertshaw; Matt Robson; Jim Saunders; Donna Simon; Sharon Svensrud; Betty Tyson; Christian Vazzaz; Bruce Williamson; Bruce Wilson; Dai Yates.**

If I have missed including anyone my apologies, but your Claims did not go across my desk. In closing please stand up and give yourself a well - deserved pat on the back for a job well done. (J.D.)

# COLLECTION

## TRAINSHED ROOF TO PROTECT COLLECTION—FUNDING NEEDED

A major project for the coming year is to fund and build a Trainshed roof over the Garden Tracks north of the Mac Norris Station. The structure is designed to be built in five sections, working progressively north from the station. It will ultimately protect 15 pieces of our rolling stock collection, making a huge improvement in the longevity of our restoration work and drastically reducing maintenance. If you value WCRA's precious collection—this is a project for you to get involved in with your financial support. We have already received funding from both Heritage BC and from Cultural Spaces Canada towards this project. (drawings by Ron Anstey) But we need your support too—please donate!



We are in the very early stages of this at this point, with drawings being prepared by an architect and engineers before we can proceed to the permit and build stage.

If you value our collection and can help support with a donation (tax receiptable) towards this project please let us know—contact Don Evans at 604-988-3435 or <don\_evans@telus.net> and we will be happy to discuss further with you.

## **PGE 561 OPERATES FOR BCMEA TRAINING WEEK**

Pacific Great Eastern RSC-3 #561 performed for a week of training of Vancouver Port workers in Squamish February 22 through March 2, a training session organized by the BC Maritime Employers Association. (R.MacB.)

## **WEST COAST RAILWAY HERITAGE PARK** *Home of the Royal Hudson*



Thomas the Tank Engine returns to the West Coast Railway Heritage Park in May—five dates again this year, May 19, 20 and 21 (Victoria Day Weekend) and then May 26 and 27. Tickets will go on sale the week of January 15, 2018 and prices this year will again be very reasonable at \$26 (off peak) and \$29 (peak).

The Day Out With Thomas “Big Adventures Tour” will see the full size Thomas perform for crowds all day, providing one ride on a scheduled departure time with each ticket. But tickets are good for all day admission to the site, and the train ride is just one of more than ten feature attractions to take in.

These include Thomas videos and storytelling, a store with special event only Thomas merchandise, photos with Thomas, live entertainment, bouncy castles, Thomas train play tables,

crafts, letters to Thomas and Friends and more. Meet Sir Topham Hatt in person, watch Thomas on the big screen and enjoy Thomas story reading.

Also available will be the famous West Coast Mini Rail rides (extra charge), great food and lots and lots of fun.

Tickets are now selling on line through **wcra.org**—order yours today! (J.C.)



## **MAC NORRIS STATION LOBBY FLOORS REDONE**

Thanks to a great job by **Dave Lentinello**, the lobby floors in the Mac Norris Station have taken on a new shine!

Dave sanded down the floors and then applied a new finish to have them looking like new all around.

This makes a great new first impression for our guests as they visit the Heritage Park this year.

The lobby is also getting freshened up with a repaint that is in progress as this issue goes to press.

(photo, Gordon Bell)

## **NEW FOR 2018**

New exhibits planned for 2018 include a school car and an operating print shop, this

continues our plan of having something new for guests to enjoy every year.

A major focus this year is on having a much more authentic heritage experience when guests visit, and this will also require more volunteers to help out. So make some plans to consider having fun this summer volunteering in some of our attractions—this makes a real difference for our guests. (G.B.)

## **VOLUNTEERS NEEDED**

So—can you help—will you help? The Heritage Park is looking for volunteers in many capacities for the summer.....these include heritage interpretation, tea house greeters and servers, gift shop and guest services, forge operators, beanery staff and more. Please talk to the Heritage Park if you can help—604-988-3435.

## **MINI RAIL AND PUMP CAR**

This year we will supplement the West Coast Mini Rail by also operating the pump car for a fun experience on our tracks. Having things that move on rails is core to our guest experience, and so both will be in full operation., The mini rail, of course, will operate daily, schedule for the pump car is yet to be finalized.

Volunteers are needed for both—contact Jeremy Davy <[jeremy.davy@wcra.org](mailto:jeremy.davy@wcra.org)> if you can help operate the mini rail, and Gord Bell <[generalmanager@wcra.org](mailto:generalmanager@wcra.org)> re the pump car. Operating and Safety training will be provided. will be provided.



## **Make your next event memorable at the West Coast Railway Heritage Park**

The West Coast Railway Heritage Park has a wide selection of space available for events such as anniversaries, weddings, birthdays, and memorials. Options include the **CN Roundhouse & Conference Centre**, the largest event venue on the Sea to Sky corridor. Guests are undeniably impressed by dining next to our unique collection of railcars including up to 8 heritage trains including the famous Royal Hudson steam train. There are 5 sets of large wooden train doors that can be opened up letting the outside in, spectacular on a sunny day. There is also the **Canron Upper Deck**—an upper level indoor/outdoor patio with spectacular views, ideal for a sunset cocktail or late night hors d'oeuvres.

The **John Hardie Mitchell Gallery**, overlooking the Royal Hudson, is an ideal space for smaller events such as a cocktail party or off-site meeting.

Our restored railcars the Alberta, or British Columbia are beautiful spaces for an intimate catered dinner or smaller meeting. Each car features a large living room with comfortable tables and chairs with large panoramic windows as well as a dining room, lounge and galley.

Our **Mac Norris Station** is also available for special occasions and meetings. There are two sides to the station; the Heritage Tea Room and the Station Waiting Area. The Waiting Area can be set up boardroom style while the Tea Room is ideal for a sit down meal or buffet. On a nice day we can even hold a meal on the outside station platform.

Impress your guests by holding your next event at the West Coast Railway Heritage Park surrounded by Canada's railway heritage. Be sure to consider the West Coast Railway Heritage Park when planning your next event. Contact Jennifer at 604-524-1011 or [jenn@wcra.org](mailto:jenn@wcra.org) for pricing and availability. (J.C.)

## **FUNDRAISING**

### **DONATION OF SHOP EQUIPMENT**

Our sincere thanks to **Bill Holt** and **Elizabeth Haan** for a significant donation of shop equipment—including bench saws, drill presses, grinders and more. The donation was appraised at more than \$5,300. This will be a great help in adding equipment to our shop and allowing for more productive work by our shop staff as they work to repair and restore equipment in our collection, and around the Heritage Park. (K.T.)

### **IBM MATCHING DONATION RECEIVED**

WCRA has received a matching grant from IBM, recognizing the support of Elizabeth Haan from two donations made in 2017. The grant total is \$6,494 which is a great help to the WCRA and our ongoing preservation of BC's Railway Heritage.

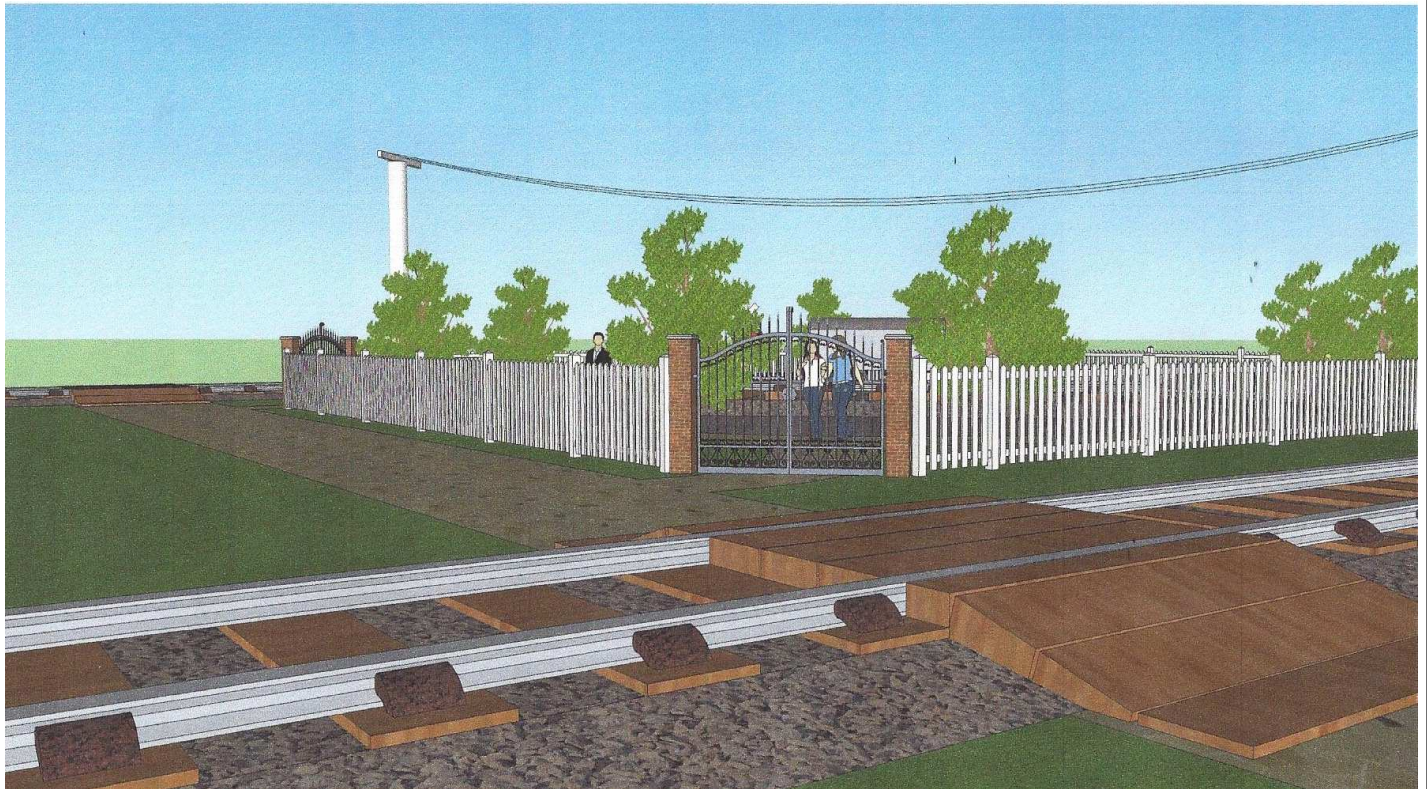
This is a good reminder to all that many employers (or past employers in retiree cases) support charitable work and donations made by employees and alumni of the organization. Matching employer grants are one way to make any donation to a charity go even further than just the amount of the donation itself. (K.T.)

## INTRODUCING TELEGRAPH MEMORIAL PARK

Have you ever wanted that very special place to remember someone who loved trains? Someone to whom preservation of railway heritage was very important? Someone to whom the West Coast Railway Association has been a significant part of their past?

Then we are now creating just that perfect place—**Telegraph Memorial Park**.

Located at our West Coast Railway Heritage Park, this special place will be located in the centre court north of the turntable, and be an attractive fenced and landscaped park setting ideal for remembrances, reflections etc. A small railcar with a special structure in the centre will provide a place for keepsakes, memorabilia, and permanent plaques about those remembered in perpetuity in the Park, surrounded by the railway heritage they so loved. Telegraph poles and wires will connect to the Operator's Bay in the Mac Norris Station, allowing a remembrance event to operate either the station order board signal or the semaphore signal along the main track. (both these will be installed when finding permits)



A space in Telegraph Park in someone's name can be "purchased" at any time. It can be for someone who has passed already, or reserved for the future. The "purchase" is in the form of a charitable donation or future bequest—the proceeds will all go to WCRA's core purpose of preserving our heritage railway collection in perpetuity for all to enjoy and learn from.

We already have our first spaces reserved, and would love to talk with any of you who may have interest in that very special remembrance—contact Don Evans at 604-988-3435

Ken Tanner at 778-668-5666 for more information on this exciting new project.



## **LOCOMOTIVE 374 PAVILION**

Our visitor count for February was 2,026. We had 68 more people than last February. It is interesting how constant our numbers are when the city claims an extra million visitors have come to Vancouver. We sure do not see it at the Pavilion. Where are they hiding them?

With the end of Winter nearing it will be nice to see a little more sunshine and a little less rain! Warmer temperatures will be appreciated at the Pavilion by our Volunteer Staff. It can be very cold and damp during the Winter months. Our N-Gauge Model Railway also performs better when it is warmer and needs less maintenance.

On Sunday May 20th at 10 AM the 374 Locomotive will be rolled out onto the Turntable Plaza. This will be the 131st Anniversary of her arrival in Vancouver. We should have her steamed up by 11:45 and the 50 Piece Brass Band will start their first set at 12 to 12:30. Following short speeches at 13:00, cake will be served in the Pavilion. Please come down and enjoy the party if you are not working at Thomas. (see photo page 12)

We are still a little short on Volunteers at the Pavilion. If you would like to help, please give me a call at 778-875-3573. We will need some extra coverage during the Summer months with staff on holidays. Any Volunteer time will be much appreciated.

We are located at the corner of Davie St. & Pacific Blvd. Just across from the Canada Line Yaletown/Roundhouse Station.

The Pavilion is currently on Winter Hours (Dress Warm) - 11 AM to 3 PM. But Spring is now here—yeah! (G.G.)



## HAIDA GWAI TOUR—a few spaces remain....

This most popular tour of recent times is back for 2018, thanks to member **Bonnie Game** and her work as a travel professional. Bonnie is donating her time and all proceeds will come to WCRA. So—come along April 27 to May 8, 2018 on this great 12 day tour.

**A Fully Guided Cultural Experience—great travel and wonderful scenery.**

### **Day 1, Fri. April 27: Vancouver to the Rockies**

Meet your guide and fellow passengers at Vancouver's Pacific Central Station by 7:00 pm. Everyone boards the train at 8 pm, and settles in for an 8:30 pm departure. Enjoy the ride as *The Canadian* winds its way through the lower Fraser Valley. By nightfall you are well into the Coastal Mountains and the Fraser Canyon before you retire for the night.

### **Day 2, Sat. April 28: The Rockies & Jasper**

Awake in the heart of the Rockies and enjoy the fantastic scenery all day. Enjoy breakfast and lunch in the dining car. By 4 pm you disembark and overnight at the charming Whistler's Inn

in Jasper for the night. (*dinner on own*)

**Day 3, Sun. April 29: Jasper to Prince George**

At 12:15 pm board the *Skeena* train and journey through Yellowhead Pass and northwest through the Rocky Mountain Trench. Enjoy the rugged splendor of Jasper National Park and the Canadian Rockies. Arrive in Prince George at 7 pm and overnight at the Prince George Ramada Hotel. (*meals on own*)

**Day 4, Mon. April 30: Prince George to Prince Rupert**

Up early to go to be at the train station by 7:30 am to depart at 8 am and continue your journey west to Prince Rupert. This trip is the most scenic of rail journeys and called *VIA Rail's* best kept secret. You pass wild rivers, mountains, gorges, high bridges, and small towns. Arrive in Prince Rupert at 8:25 pm for your stay at the Prince Rupert Prestige hotel for the next 3 nights (*Breakfast included, food available for purchase on train*)

**Day 5, Tues. May 1: Prince Rupert**

Today there will be a private group tour of the Northern Pacific Cannery National Historic Site. The site features exhibits, architecture, historically-inspired cuisine and the pristine wilderness surrounds that tell the story of an industry that played an integral role in BC's history. The seafood chowder is highly recommended!

**Day 6, Wed. May 2: Prince Rupert**

Today is a free day to explore Prince Rupert at your leisure with an optional tour of the Museum of Northern BC. Prince Rupert is famous for its wilderness, wildlife, seafood, colourful historic homes and culture.

**Day 7, Thurs. May 3: Prince Rupert to Haida Gwaii**

Everyone meets back at the hotel and transfers to the ferry terminal to board the 10 am daytime ferry to Skidegate. You will arrive at 5 pm and be met by your local guide and transported to Queen Charlotte City for dinner. After dinner you will be transferred to Engelhard's Oceanview Lodge in Masset, your home for the next 5 nights.

**Day 8, Fri. May 4: Haida Gwaii**

After breakfast, your guide will pick you up at 9 am and you will start your Islands tour of Naikoon Provincial Park, Agate Beach, Tow Hill and North Beach. Guests are on their own for dinner. (*breakfast and lunch included*)

**Day 9, Sat. May 5: Haida Gwaii**

After breakfast, your 9 am tour begins with visiting Port Clements Settlers Museum, Yakoun River, Haida Canoe and Golden Spruce Trail. The evening is capped off with an included authentic native dinner, cooked in a local's home. This is a trip highlight with rave reviews.

*(breakfast, lunch and dinner included)*

**Day 10, Sat. May 6: Haida Gwaii**

After breakfast, at 9 am your tour of Greater Masset begins with Delkatla Nature Sanctuary, Totem poles of old Masset, Thluu Xaada Naay Society, and the Dixon Entrance Maritime Museum. For dinner this evening you will have a private authentic Haida dinner and long house dance. *(breakfast, lunch and dinner included)*

**Day 11, Sun. May 7: Haida Gwaii**

After breakfast, depart at 9 am for your tour of Skidegate, the Bill Reid carving shed and Haida Heritage Centre and Museum before returning back to the Lodge at around 5 pm. *(breakfast and lunch included)*

**Day 12, Mon. May 8: Haida Gwaii to Vancouver**

On this the last day, early morning is free before you are transferred to Masset airport for your Pacific Coastal Airlines flight at 11:30 AM arriving in Vancouver (YVR) at 2PM

***Note—Some trail and beach walking is required.***

***Tour includes:*** ViaRail private accommodations, hotel accommodations, tour escort and guides, museum admissions, all transportation, return flight from Massett BC to Vancouver and all taxes.

*All fares, schedules, and itineraries are subject to change without notice at any time. West Coast Rail Tours is not responsible for services cancelled or modified by travel partners.*

**Pricing—\$3,340 Double Occupancy, \$4,050 Single Occupancy**

This tour will likely sell out quickly—call Bonnie Game today at 604-802-0490 or e mail bogame@cruiseshipcenters.com (B.G.)

## FEATURE ARTICLES

**FROM WCRA NEWS—MARCH 1979**

**Thanks to Craig McDowall**

**CP**

CP Rail's piggyback and container facility will be re-located from False Creek to Coquitlam

in the fall of this year at a cost of \$5.5 million. The facility will be located on 26 acres of land in Marathon Realty's Mayfair Industrial Park and will be twice the size of the current facility in False Creek.

CP Business Car #12 underwent major repairs at Drake Street Yard late last year. Roof replacement and carbody repairs were completed and the car now has the arched roof appearance similar to that of the 'Van Horne' and 'Shaughnessy'.

### **CN**

CN has reported a preliminary net income of \$136 million for 1978 compared to final net income of \$28 million for 1977. About \$60 million of the increase is reflected savings in interest charges resulting from the passage of CN recapitalization legislation in June 1978.

### **BCR**

The BC Government has purchased two used passenger coaches from Brown Equipment/Chicago. One of the coaches will be used to transport school children from Shalath and Seton to Lillooet. This car will be acquired by BC Hydro for this school project. The second coach will be used to provide improved service to railway camps and gang locations on the Fort Nelson extension. Built in 1947, the coaches were purchased at a total cost of \$11,500,

A new yard office and tower is being built at the Prince George Yard at a cost of \$1.5 million. Construction will begin in April and will be completed by the end of 1979.

The BC Government has approved an interim grant of \$4 million to BCR to cover part of the operating losses incurred by keeping the Fort Nelson extension open.

The Royal Hudson's Vancouver Island portion of the 'Good Times Express' will utilize locomotive #1077, the ex MB 2-6-2, due to weight restrictions not permitting the Hudson to go to the island. The schedule from May 12th to May 21st will visit all major centres on the E & N line including Port Alberni.

### **VIA**

An eight car westbound VIA passenger train powered by three units caught fire 13 kilometres west of Boston Bar on March 12th after the lead unit hit a rock which ruptured a fuel tank in the derailment. No injuries were reported among the 80 passengers and 20 crew members. The lead unit, F unit #1412 caught fire which spread to GP9 unit #8517 and scorched trailing F unit #1411.

### **BN**

BN RS-11 #4196 has been sold for scrap to Simon and Son in Tacoma. This is the first RS-

11 to leave BN's roster. Two other RS-11's are stored unserviceable here in Vancouver.

BN's Willamette River bridge into Portland was damaged on Oct 28th after a Norwegian container ship struck the downstream end of the pier supporting the centre span freezing the bridge open. It took seven weeks to repair it. BN has now sued the Knutsen Line, owner of the ship, as this was the maiden voyage but this is where it gets really stupid. After leaving Portland to go upstream after repairs, it then struck the Fremont Bridge which supports Interstate 405 over the same river! The damage was far less severe, around \$50k to repair the bridge. The damage to the BN bridge in the initial collision cost \$3.2 million. BN, Milwaukee Road and AMTRAK trains between Portland and Vancouver WA were rerouted through UP's Albina Yard adding 30 minutes to their schedules.

### **Misc. Items**

Portland Terminal's S-2 #39 was returned to service last September after being stored at the Lake Yard roundhouse for some time. This leaves only S-4 #45 as the only PTRR loco out of service.

White Pass & Yukon has responded to a federal rejection of a plea for financial aid by seeking tariff increases on its mixed sea-rail route between North Vancouver and Whitehorse.

### **SHAY RESTORATION PROJECT CONTINUES ON VANCOUVER ISLAND**



Further to our item in the last issue, work continues on the restoration of Shay #1 over on Vancouver Island. The photo on page 16 shows the locomotive in years past on the line at the BC Forest Discovery Museum in Duncan, BC. In addition to the new boiler being built, work is also needed on the motor and trucks. The museum has the volunteer resources and skills it needs, but continues fundraising for at least another \$25,000 to see the locomotive ready for reassembly and operation. More info at <[www.bcforestdiscoverycentre.com](http://www.bcforestdiscoverycentre.com)> (J.P.)

## RAILWAY NEWS



### LOCOMOTIVE SPOTTING GETS INTERESTING!

Locomotive spotting on CN has become very interesting, as leased power in a rainbow of colours goes to work for the busy railway. It seems most trains spotted these days have multiple colour schemes—such as train Q 11651 seen here at Ashcroft on February 17th with leased GECX 7354 in the lead. (photo from Mike Mastin via J.M.)



Earlier train L 54691 25 arrived Thornton with CN (IC) 9604 / CN (GTW) 6225 and leased units GECX 7355, 7354, 7344, 7377, 9497, 7353, 7336, 7558, and 7368. (J.M.)

Arriving at Thornton off BNSF on March 1 was PLRX 236 (painted BNSF orange but with the BNSF painted out on the sides). It left almost immediately for Prince George on train 354, and then was in Squamish March 5. Your editor then saw it northbound at Williams Lake on March 6th! (J.M., T.M.)

A power set at Squamish on February 25 was BCOL (BC Rail paint) 4616 with Illinois Central SD 60 1029. And in Squamish on train 571 March 21 was CSX 7927 with CN 2240 leading.



## LOCOMOTIVE NEWS

CP, while not having leased locomotives like CN has, is still interesting as there are lots of run through units on the line these days. Most common appearances are units from Union Pacific and Norfolk Southern. (J.M. and others). Watch for those shiny newly rebuilt CP AC4400CW units—numbered in the 8100 series - they are showing up around here quite regularly.

## REROUTES

A number of trains were re-routed through the southern line (via Cranbrook) after CP train 401 derailed east of Field on February 16th.

**Visit Our  
New Location  
Just 83' West of  
our Old Location  
2825 Grandview Hwy in Vancouver**

### **CENTRAL HOBBIES**

**Your One Stop Scale Model Train Shop on the West Coast**

2825 Grandview Hwy., Vancouver, British Columbia V5M 2E1

(604) 431-0771 Fax (604) 431-9855 ORDERS (888) 7trains (787-2467)

Web Site: [www.central-hobbies.com](http://www.central-hobbies.com)



*We also stock a  
large selection of  
books and magazines!  
Open Daily at 11 a.m.  
Monday thru Saturday*

**CREDIT LINES**

Editor

Don Evans

Distribution

Jeremy Davy & Donna Simon

ISSN 1204-07

Vol. 58 Issue 4

Contributors:

G.B.	Gordon Bell	J.C.	Jennifer Chisholm
J. D.	Jeremy Davy	B.G.	Bonnie Game
G. G.	George Game	J.M.	Jim McPherson
T.M.	Trevor Mills	J.P.	Jack Peake
D.S.	Donna Simon	K.T.	Ken Tanner

Send contributions to the WCRA PO Box, direct to the editor at #28 - 2133 St. Georges Ave., North Vancouver, B.C. V7L 3K5, on the Internet to <[news@wcra.org](mailto:news@wcra.org)>, phone news to (604)988-3435(res) or fax to (604) 986-7660. Check us out on the Internet at <[www.wcra.org](http://www.wcra.org)>

**Contact us: 604-524-1011 / 800-722-1233 Heritage Park 604-898-9336 Office 604-681-4403  
CN Roundhouse & Conference Centre 604-898-1082  
[wcra.org](http://wcra.org)**

**BACK COVER**

Local CN power at Williams Lake on a sunny but cold March 6, 2018 included GP9 #7276 (nee CN 4305) and GP40-2R #3026 (nee Wisconsin Central). #3026 began life as Milwaukee Road #192 back in 1966!

**TRIVIA ANSWER**

The *Big Four*: GWR - Great Western Railway, LMS - London, Midland & Scottish, LNER - London & North Eastern, and SR - Southern Railway. Prior to this the English railway's included the Great Central; Great Eastern; Great Northern; Great Western; Lancashire & Yorkshire; London & North Western; London & South Western; London, Brighton & South Coast; Midland; North Eastern; and South Eastern & Chatham. While the Scottish railways were the Caledonian; Glasgow & South Western; Great North of Scotland; Highland; and North British. Most narrow gauge railways remained independent.



**CANADIAN COUNCIL  
FOR  
RAILWAY HERITAGE**

WCRA News acknowledges the financial assistance of the Province of British Columbia



Published monthly by West Coast Railway Association  
PO Box 2790 Stn. Term., Vancouver, B.C., V6B 3X2  
[www.wcra.org](http://www.wcra.org)

ISSN 1204-072X  
Vol. 58 Issue 4

Canada Post, Canadian Publications Mail Sales Product Agreement #40007853