



# **WCRA NEWS**

## **JANUARY 2016**

**MERRY CHRISTMAS AND  
HAPPY NEW YEAR**

**POLAR EXPRESS RECORD!**



## GENERAL MEETING

The **General Meeting** of the WCRA will be held on **Tuesday, December 22 at 1930 hours** at Rainbow Creek Station, corner of Willingdon and Penzance in Burnaby.

Entertainment will be a video 'Queen Of the Rails' about the Durand Union Station, history and restoration.

## ON THE COVER

Polar Express 2015 has a new look this year, as the Business car *Alberta* gives the tail end of the trains a classy new look. The train also expanded by two coaches, and that increase capacity plus the addition of a fourth weekend grew to a record setting sellout—12,600 guests! (Christian Vazzaz photo)

## DECEMBER / JANUARY CALENDAR

- **West Coast Railway Heritage Park open daily 1000 through 1600k**—Roundhouse and grounds open only on weekdays, admission by donation. Regular operation weekends.
- December 19 and 20—final weekend of Polar Express—Heritage Park
- December 18, 19, 20, 22, 23 and 27—TRAMS Vancouver Christmas lights tour by vintage bus—departs at 1900 hours each day from Skytrain's 29th Ave. station (page 9)
- Daily To December 23—Christmas Mini Rail at the Locomotive 374 Pavilion
- December 25—Merry Christmas to all
- January 1—Happy New Year!
- Friday, January 8 —Deadline for items for the February 2016 WCRA News
- Sunday, January 10—Estate sale at Bob Booth home, HO brass models, RR books and more, call Leanne at 604-990- 8372 for info (page 9)
- Tuesday, January 26—**WCRA General Meeting**, Rainbow Creek Station, 1930 hours

The West Coast Railway Association is an historical group dedicated to the preservation of British Columbia railway history. Membership is open to all people with an interest in railways past and present. We are a non-profit British Columbia society, registered as a Canadian charity. Membership prices are as follows, **Please note that GST must be added to all fees:**

Senior \$50 (\$52.50), Individual \$55 (\$57.75), Family \$65 (\$68.25) **E Members (electronic newsletter only) are \$35 (\$36.75) Senior, \$40 (\$42.00) individual and \$50 (\$52.50) family.** Other categories are:

- Junior Member (age 18 and under) \$ 30 (\$31.50)
- Sustaining Member \$100 (tax receipt) **plus** membership type regular fee
- Life Membership \$700 (\$735) individual life / \$1,200 (\$1,260) family life

All memberships include the monthly newsletter, Heritage Park admission (except Special Events), mini rail rides and discounts on food and merchandise. The Association holds a monthly meeting on the last Tuesday of the month at 1930 hours in Burnaby at Rainbow Creek Station in Confederation Park. Apply through **www.wcra.org** or mail to WCRA, PO Box 2790 Stn. Term., Vancouver, B.C., V6B 3X2.

# EDITORIAL

## GREAT YEAR, BUT TOUGH FINISH

The year 2015 has been a busy and successful year for the WCRA in most regards, however we end the year faced with some challenges to overcome. That was the topic of a special meeting of the WCRA Board at the end of November, resulting in a plan of action to follow forward as we enter 2016.

The biggest successes were in our events such as Day Out With Thomas and Polar Express, where we set new records for both numbers attending and earnings from operations. These helped fuel us to what will be a successful year of growth from operations. We expect to end the year with best ever visitor numbers at both the Heritage Park and 374 Pavilion. We also made great progress on our rolling stock, with the bringing back to life of FP9A #6503 and the significant upgrading and certification of our operating trainset.

However, we also had our challenges. Our charitable fundraising looks like it will fall short of targets and several planned strategic initiatives for 2015, including getting excursions back in operation, did not come to fruition. The result of all of this is that we will have to work hard to ensure our financial performance metrics are met and we will be very tight on cash at year end. This requires both diligence and action.

The board's plan for 2016, which was agreed to for implementation, includes measures of both cost reduction and new revenue generation. Included in the plan are temporary cutbacks in staffing as well as Heritage Park operations in the first quarter. On the growth side are plans to expand both Day Out With Thomas and Polar Express for 2016, and to introduce another children's based event. We will move forward to operate some excursions, and will increase marketing of the Heritage Park and the CN Roundhouse & Conference Centre. We will also put additional effort into our charitable fund raising with some new resources.

While some of these measures are painful, they are necessary as we must adjust our operations to the situation we have in order to ensure our continued success over the long term. All of our board and senior staff support the steps being taken, but we also need the full support of all of our members and volunteers as we move ahead into 2016. The 2016 budget is robust, and as we continue with our strategic initiatives we will also bolster operations to ensure a continuing strong financial position and our ability to move forward. A major re look at our strategic plan is also in order, and this will be undertaken in the Spring.

Thanks to all of our supporters—we need you all with us, especially at this time. May you all have a Merry Christmas and a Happy New Year.

*Don*

# ASSOCIATION NEWS

## FROM THE NOVEMBER GENERAL MEETING

WCRA's November meeting was our Annual Christmas Dinner and Awards meeting, held at the Accent Inn in Burnaby again this year. Around 70 members and guests enjoyed the evening, with a nice turkey dinner and great social time. MC was **Craig McDowall** and he kept things moving right along. Thanks again to **Paul Ohannesian** for doing up the awards plaques, which this year featured a **Don Evans** photo of the two newly completed "CN" coaches at the *Mac Norris Station*, alongside the pumpkin patch!

**Ken Tanner** led the presentations of the Annual awards.....

## CORPORATE SUPPORT AWARD

Winner – **Boston Pizza Squamish**

**Brent and Cathlene Bessey**

Boston Pizza have been long-time sponsors of our events at the Railway Heritage Park. Always there to sustain our volunteers during Thomas, Polar Express and many other events, Boston Pizza have consistently supported WCRA public initiatives. They have donated food to sell at Polar, and many of their staff continue to volunteer at our events. Their generosity is very inspiring, and we count them as true friends of the park.

Past winners: Canadian Western Bank, Kinder Morgan Terminals, Nesters Market Squamish, G Van Catering, Cardinal Concrete / Coast Aggregates, Southern Railway of BC, BCR Properties, BNSF Railway, All Pro Services Ltd., Continental Power Services, Duro Construction Ltd., Mountain Retreat Hotel & Suites, Canadian National, Canada Post Corporation, Rocky Mountaineer Railtours, Tim Horton's Squamish, Howe Sound Inn & Brewing Co., BC Tel Education, Dairyworld Foods, BC Rail, Amix Salvage, Canada Place Corporation.

## MEDIA AWARD

Winner – **Global TV**

Global TV has been our Major Media Partner for the past three years for our two major events each year: 'Day Out with Thomas' and 'The Polar Express'. Part of these packages includes free exposure on their 'on air' Community Calendar "BC Now" and other promotional components. But where they have really have 'come to the table' in the past two years was for two of our smaller events, where we don't have the budget as we would with the Polar Express, they have offered their Community Calendar without us having to make a normal large media buy.

This was quite frankly 'outside the norm' and much appreciated by the WCRA in order to

minimize our advertising expense. We are pleased to award the Media Partner award to Global. Unfortunately, they couldn't attend tonight but we will pass this award onto to them.

Past Winners: Rick Mercer Reports, John Streit CKWX, Rob MacBeth, Malcolm Parry, The Chief, Marke Andrews - Vancouver Sun, SNAP Sea to Sky, Cable 10's "My Squamish", Vivian Moreau, The Province (Damian Inwood), Soul Image Communications, Art Jones & Co., BC-CTV, Squamish Chief, Global TV News, Seniors Scene, [www.wcra.org](http://www.wcra.org), Squamish Chief, Bill Hughes, Squamish Chief, Mountain FM, Eleanor Godley.

## **BEST CONTRIBUTION TO THE NEWSLETTER**

Winner – **John Day**

Our winner this year of the Best Contribution to the Newsletter award has chased steam all over the world for many years. We were pleased this year when he wrote a two part feature article on steam trains in Washington and Oregon – in fact the article (and accompanying photos) were so good that The Association of Tourist Railroads and



Railway Museums asked if they could re print it with permission (which was given). We hope he writes about many more in the future. Our winner this year is **John Day**.

Past Winners: Mike McGaw, Ryan Cruickshank, Russ Grycan, Craig McDowall, John Day, Patricia Treadwell, Jim McPherson, Bill Johnston, Craig McDowall, Grant Ferguson, Dave Emmington, Jim McPherson, Richard & Margaret Harvey, Paul Ohannesian, Allan B. Peden, Bill Yeats, Win Oliver, Art Hamilton, Randy Rand, Bill Yeats, Ryan Cruickshank, Patrick Hind

## **VOLUNTEER AWARD**

Winner – **Howie Tichauer**

What would the Minirail be without **Howie Tichauer**? The ever present Howie has been an institution at the Railway Park for so many years. Howie has been a fixer, conductor, engineer, manager, maintainer, scheduler, worker and spirit of the Minirail for the many years he has been associated with WCRA. Howie remarkable brand of humour and good nature has endeared him to many of us, and we surely miss his banter and laughter on a daily basis at the park. We wish Howie the very best in his new life on Vancouver Island, and we want him to



know that we miss him dearly.

Past Winners: Ernie and Lynn Ledgerwood, Roy Crowston, Barbara Stover, Jim Saunders, Howie Tichauer, John Jellis, John & Fay Lighthall, Jeremy Davy and Donna Simon, Chris Forget, Irena Erdos, Kevin Smith, Joe Kerr, Ken Mason, Glen Wideman, Percy Fairhurst, Nick Monkhouse, Dusty Rhodes, Devon Generous, Paul & Mary Roy (twice), Bill & Dorothy Lahr, Marcie Phillips

## **MOST SIGNIFICANT CONTRIBUTION TO RAIL PRESERVATION**

**Winner: Randy Lucas**

Is there a coach at WCRA, an exhibit, an operating unit, or a heritage railcar that has yet to feel Randy's touch? Without doubt, Randy has been the anchor of restoration at WCRA for so long. The list of his work is way too long to list – even the big ones like the Alberta, Colonist Car and the operating fleet coaches are many. Randy, you have given the park and the Association many years of talented, skilled craftsmanship in the painstakingly



precise, and incredibly delicate work of restoring & finishing – bringing those most precious artifacts back to life for everyone – guests, members and so many others. Randy, we will certainly miss you and Lynn around the park, but the heritage coaches that we cherish and preserve - they will miss you even more. Thanks for so many years of dedication and commitment. So much appreciated.

Past Winners: Tyler Kion, The Monday Crew, Chris Forget, Randy Lucas, Robert Hunter, Chris Forget, Dave Emmington, The Troop Sleeper gang, The 6503 team of Greg Robertshaw, Michael Batten & Richard Courage, Peter Cox, Richard Courage, Bob Spencer, Paul Ohanessian, Fred Dannells, Ron Anstey, Kevin Pruden, Dave Simpson & Judy Lunn, Barbara Brown & Bruce Mackay, Devon Generous, Gerry & Jo Black, Ron Anstey, Ken Paget.

## **NEW GENERATION AWARD**

**Winner: Tom Hodgson**

Tom is a 'little' inspiration! He is 8 years old and has already been a volunteer at the park for 2 years already. His knowledge of railway and model railroading is incredible. He and his family volunteer at Thomas and run the Garden Railway for us. He is VERY serious about his commitment and has formally 'applied' for the job at Polar Express running the HO and G



Scale. He and his family have also adopted a Tank Car at the park and have begun restoration on it in the Car shop. They are here almost every weekend. Tom, we welcome you as one of our youngest “railroaders”.

Past Winners: Morgan Payette, Devon Bailey, Travis Clark, Kayla Simon, Connor Park, Rob Misjak

***This year, in addition to our usual annual categories, we are pleased to present a special award.....***

### **SPECIAL AWARD - COMMUNITY SUPPORT**

#### **Howe Sound Secondary School, Leadership Teachers - Dan Fay & Kevin McJannet**

These teachers have “saved the day” for the West Coast Railway Heritage Park on many occasions. They stimulate very dedicated students to see service to others through volunteering as a valuable contribution. They inspire the students to get involved in community life, contributing to events, and representing a younger generation that is willing to reach out to their neighbours and community. . This in turn gives us an opportunity to know some really wonderful kids whom we have been able to see grow into responsible adults well after their graduation. Thank you Kevin and Dan for being the inspiration for these young leaders of tomorrow.

Following the awards there was a draw for door prizes and raffle items, and thanks were offered to Jennifer Mitchell and Bonnie / George Game for their help.

Thanks to everyone for coming and Merry Christmas.

**WCRA TRIVIA #325 - By Ryan Cruickshank**

What significance does the children's book "**The Great Jug**" carry?

(Answer on page 26)

**MEMBER NEWS**

Congratulations to WCRA Director **Lisa Tuningley** on the formation of the WCRNA—Western Canada Rail Network Association—a railway industry group for the sharing of best practices in all areas of railroading. More at [www.railnetwork.ca](http://www.railnetwork.ca)

**NEW MEMBERS**

- James Barton and family of West Vancouver;
- Barb Clark and family of Brackendale;
- Rebecca Cremin of Surrey;
- Andrea Faerberboeck and family of Squamish;
- Kathy Forbes - Clothier of Surrey;
- Alan Gatzke of Oyama;
- Alissa Kristiansen and family of Garibaldi Highlands;
- Albert Malenstyn of Surrey;
- Jeanine Marshall of Langley;
- Asa McKee and family of Squamish;
- Kat Seipmann and family of Garibaldi Highlands;
- Kate Spazier and family of Squamish;
- Lisa Tuningley of Surrey;
- Michael & Daphne Urban and family of Garibaldi Highlands;
- Anthony Weir and family of Vancouver.

We welcome back to membership:

- Jane & Daren Clark and family of Squamish;
- David Davies of Burnaby.

(J.D.)

**PLEASE RENEW YOUR MEMBERSHIP....**If your label reads 11/30/2015 then you need to renew, if it reads 08/31/2015 then this is your last issue. Please renew!

**VOLUNTEER HOURS - Reporting**

As part of the supporting information provided when seeking funding from other organizations the WCRA relies heavily on the hours that our volunteers generously donate while carrying out the activities of the Association.

Everything you do for WCRA counts - except attending General meetings ... Volunteering at the Heritage Park or as Custodian at the 374 Pavilion, Serving on a committee or as a Tour



Host, Attending board meetings or working on Association related projects at home; — all hours are important and all hours count.

WCRA is required to report Volunteer hours given annually at the Heritage Park and to the BC Safety Authority and to include them in the Park's Safety Management System statistics. As a minimum - Please separate your hours into Time spent at the PARK and OTHER when you report them.

Please submit volunteer hours for 2015 as soon as you can as they need to be included in the Annual Report. Please let **Donna Simon** know the time you have donated. You may do so by email to [membership@wcra.org](mailto:membership@wcra.org) or by calling 604.815.0812 (604-484-2791 toll free from Vancouver calling area) – both phones have voicemail. If you prefer to send your information by snail mail you can address it to Donna at PO Box 2535 Garibaldi Highlands BC V0N 1T0.

## **VOLUNTEER ACTIVITIES - Mileage**

Don't forget that all mileage incurred while doing the Volunteer activities you report are eligible for a Tax Receipt by way of a Cheque Swap. Unsure how to do this? For assistance contact Jeremy at [membership@wcra.org](mailto:membership@wcra.org), or calling either of the numbers above. Arrangements need to be made by December 31 in order to receive a 2015 tax receipt (D.S.)

## **RAILWAY / MODEL RAILWAY ESTATE SALE IN NORTH VANCOUVER**

The estate of the late **Bob Booth** will hold an estate sale of lots of Bob's collection of railway books and model railway items and tools. This Railroader's "flea market" will take place on Sunday, January 10 in North Vancouver from 1PM to 4PM. Included in the sale is a large collection of incredible HO Scale brass steam locomotives. Contact Leanne Roy at 604-990-8372 or [leanneroy@shaw.ca](mailto:leanneroy@shaw.ca) for info. And directions.

## **CHRISTMAS LIGHTS TOUR BY VINTAGE BUS**

TRAMS is offering their traditional Christmas lights tour of Vancouver, riding on one of their vintage transit buses. The bus departs from the 29th Ave. Skytrain station at 7PM on December 18, 19, 20, 22, 23 and 27. Cost is \$20 adult, \$15 Senior . Student and \$5 children for the two hour tour. You can book on line at [www.trams.ca](http://www.trams.ca) (D.L.)

## **WHISTLE POSTS WEST**

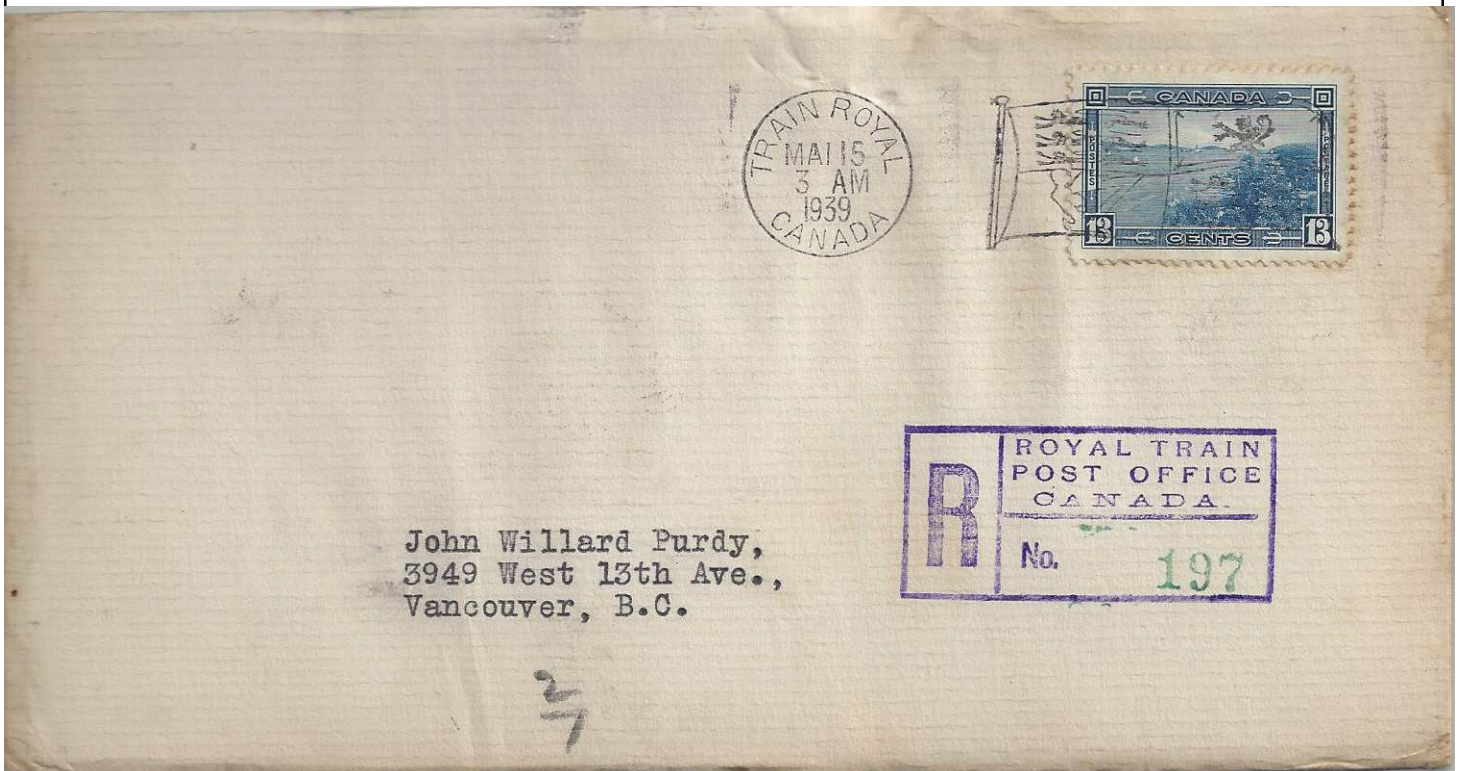
A new book of railway stories in Western Canada has been released by Heritage House Publishing. Authors **Rick Antonson**, **Brian Antonson** and **Mary Trainer** have captured some of the most fascinating and exciting stories of the rails in British Columbia, Alberta and the

Yukon over the years. Many close to home items include the authors portrait being taken at the Locomotive 374 Pavilion, and a story on the Royal Hudson 2860—and much, much more. Available now, cover price just \$18.95. A fascinating read and a quick climb up the BC Best sellers list.

## COLLECTION

### ROYAL TRAIN STAMP COVERS DONATED

The WCRA has received a nice donation of covers (stamped and addressed mail) mailed from the 1939 Royal Train Post Office car. Thanks to the **Estate of Martin Rogers** (via **Paul Ohannesian**) for these. They will become part of our Royal Hudson display and add another dimension to the Royal train of 1939 that crossed Canada in both directions.



You can clearly see the postmark on the envelope and also the stamp of the Royal Train Post Office on this letter, one of more than ten that were carefully preserved.

### THANKS

- To the estate of **Bob Booth** for the donation of more great archival items...
  - 30 steam-logging b&w photos, large format, nicely mounted, many of this area, with the crews stopped work to look at the camera;
  - about 100 large rolled prints from RR engineering drawings, of steam locos details, and

buildings, etc; many are CPR.

- 3 large copies (1300 pages) of Locomotive and Car-builders Cyclopedias, a 1919 original, and 2 '40s re-issues.

- To the **Terminal City Club** for the donation of 12 board room leather chairs and to **Heritage Office Furnishings** for storing them before delivery by **Salmon's Transfer** to the Heritage Park.

## WEST COAST RAILWAY HERITAGE PARK

### *Home of the Royal Hudson*



### POLAR EXPRESS - A RECORD YEAR

As we go to press, two of the four weekends of Polar Express have completed and the event is going to set many new records. Total ticket sales will top 12,600 making this the largest event ever for the Heritage Park, and delighting thousands as well as introducing them to our very special place in Squamish.

As you can see from Christian's photos on the front and rear covers, the train this year is longer and features the business car *Alberta* on the tail end—consist is CPR FP7A #4069, power car WCXX 9622 *McDonald Creek*, then coach *Capilano*, first class coaches *Porteau*, *Paul D Roy*, WCXX 3223, *Harry & Margaret Bluck* and *Bill and Dorothy Lahr*, and business car *Alberta*. It is one fine looking train and kudos go to the crew for getting everything ready and certified for operation.

Inside the North Pole, activities and displays are better than ever, with the mini rail train and a longer tunnel, draped windows for better lighting, Santa and Mrs Claus, the Royal Hudson cab staffed with engineer, and an expanded toy train set up by **Gordon Hall**. There is lots to do and see and we seem to be handling the bigger crowds well.

As last year, **T Rail Products** sponsored a coach for the **CHILD Foundation** and that was a grand time for the children and the sponsors volunteers.

So, two more weekends to go—and a full report will follow in our next issue.

### CANADIAN COUNCIL FOR RAILWAY HERITAGE MEETS

The Canadian Council for Railway Heritage held its fall 2015 Annual General Meeting at the West Coast Railway Heritage Park on Saturday, November 28 with attendance from Saskatoon, Calgary, Revelstoke, Kamloops, Prince George, the Fraser Valley and WCRA. As Polar Express was in full operation that day, the meeting was held aboard the *Lions Club* lounge car, a venue that worked very well for the group in a pleasant setting—thanks to the **Lions Club of Squamish** for use of their railcar for this meeting.



At 1330, the group ended their meeting and reconvened aboard the business car *Alberta* on the 1400 departure of The Polar Express. It was a delightful ride on a perfect sunny afternoon with snow capped mountains all around. (photo Don Evans)



## HERITAGE PARK WINTER OPERATIONS

The West Coast Railway Heritage Park will go into a winter operations mode effective January that is a little different from past years. The Park will remain open every day for guests, however on weekdays during the first months of the year, only the Roundhouse and exhibits will be open. On these days there will be very limited staff, and admission will be by donation. The Park will be in regular full operations for guests on weekend days. (G.B.)

## GIVING TUESDAY—NORTH POLE WELL VISITED

The West Coast Railway Heritage Park participated in this year's Giving Tuesday by giving back to the community. On Tuesday, December 1 the North Pole (in the CN Roundhouse & Conference Centre) was open with free admission for the local community to take in all the excitement of visits with Santa and Mrs. Claus, mini rail rides, the toy train displays and many other Christmas activities. More than 400 people attended! (G.B.)



# ROYAL HUDSON 2860

## ROYAL HUDSON FUNDRAISER

Thank you to all who have supported our Royal Hudson fundraiser to date. We have raised \$18,256 for this to the end of November and it is never too late to make a contribution. These funds will be used to bring steam expert Scott Lindsay to BC in early 2016 and start work on the detailed plan for the next phase of the restoration of locomotive 2860. We are bound and determined to have the Royal Hudson steam for future generations. Remember that donations of \$250 or more receive a framed art rendering of the 2860's builders plate.

## FUNDRAISING

### WELCOME TO OUR NEW DIRECTOR OF DEVELOPMENT

We welcome **Brenda van Engelen** on board as West Coast Railway Association's new Director of Development. Growing our charitable donation base is essential as we move forward towards future phases of both development and operations.

Brenda comes to us as an experienced fundraising professional, something WCRA has not had for some years. Her experience and skills will help us make our fundraising and revenue development more professional and more strategic, and will help shift us back into a growth mode in these important areas.

Brenda has about 20 years of leadership experience in the non profit leadership and charitable fundraising in the Vancouver area and most recently was Executive Director of the Vancouver Public Library Foundation.

For me, it is certainly time for this move and I welcome Brenda aboard. I advised the board two years ago of other future commitments that I had and this year, as my available time has decreased significantly, WCRA's fundraising has declined accordingly. I will be pleased to support and work with Brenda as she gets up to speed with WCRA, and will continue as an active supporter any way that I can. Our goal is to recover our giving level and also grow our charitable fundraising even further.

### ANNUAL DIRECT MAIL

WCRA's Annual Direct Mail appeal is now out—and a special thank you to those who have already supported it with a donation. We always do our annual appeal in mid November to give our members and friends the chance to include WCRA in their annual charitable plans, and we hope you will do this in 2015. For you as a donor, charitable contributions generate

tax savings back to you of up to 44% - thus you get to help WCRA for just 56% of the real cost of a gift you make. December 31, 2015 is the deadline for charitable donations to be received for 2015 tax year receipts.

And, WCRA needs your support. For us, the start of each year is our lowest revenue time so your donations in December help keep us going in the New Year while we get our next year's operating events open for sales. And, as noted in our editorial this month, the start of 2016 is going to be extra challenging.

It is absolutely amazing what we have been able to accomplish over the past years, building one of North America's leading railway museums, preserving an amazing heritage collection, and educating around the story of how Canada's railways created the communities and economies that we enjoy today as British Columbians. To keep up this work—we need your continued help. Thanks for all your support to date—we could not have done it without you, and we still need your support—you make the difference!

### **PLANNED GIVING—LEAVE A LEGACY GIFT**

Have you considered a future gift to the WCRA in your will? This is an easy way to make sure that organizations you love and wish to have ongoing success are looked after in the future. It also generates a major tax savings for your estate and takes just a few minutes to arrange.

Simply put, Planned Giving is about planning for a future gift to WCRA. The ability to make such a gift is based solely on the assets that you have available to be directed to someone or some organization when the time comes. You can only choose to leave your estate (value) to three places—to others (eg. family), to charity (such as WCRA or other causes you support), or to the government. **The choice is yours to make!**

WCRA has a Planned Giving package that we would be happy to send out or discuss at your request, as well as access to independent advisors if you wish to discuss this with someone.

Call Don at 604-988-3435 for more information.

### **PROJECTS FUNDRAISING**

Current Project Specific Fundraisers and where we are.....

- **FP9A #6520**—thanks to your support, we have made 6520 operational. Still ahead, the cosmetic part—much body work and a new paint job. It would be great to see her complete in shiny new paint in the classic CN 1950's passenger paint scheme.
- **Northern Summit**—on line fundraiser, needs more support before work can commence

- **Roundhouse Paving**—we raised about 2/3 of funds needed, still need another \$4,500 to complete—on hold for now pending further funding.
- **Semaphore**—as you have read, we have acquired a heritage semaphore signal and want to install it as a working unit at the Heritage Park. We need just \$2,500 for this—the first \$1,500 has been committed.

## **PAVERS INSTALLED—GREAT CHRISTMAS GIFT**

Next time you visit the West Coast Railway Heritage Park, stop over to the Mac Norris Station and have a look at the installation of the engraved paving stones along the walkways. These make an excellent Christmas gift for those on your “hard to buy for” list—and they leave a permanent legacy of the gift as well. More info or need an application—they are on line at [www.wcra.org](http://www.wcra.org) or give the Heritage Park a call and we will get one out to you.

## **374 PAVILION**

Our Visitor Count for the month of November was 2,084. We had 1,424 less visitors than last November. Our 2015 Year To Date Visitor Count is 43,100. Down by 1,150 at this time last year. It was a very quiet November at the Pavilion.

The 374 Pavilion has been decorated for Christmas and the MiniRail is operating for all the



children and adults who love train rides. We are hoping for a record season of riders.

**Gordon Hall** has also set up a Model Train Christmas Display.

Thanks Gordon! We really appreciate it! The kids even more.

(photo George Game)

Special thanks for all the BCSME and WCRA Members who have donated their time to setup and operate the Christmas MiniRail.



Please come down before December 23 for a ride and see the displays.

This brings us to: the call for volunteers. The MiniRail will be operating until Dec 23. Hours are 10 to 6 Mon-Thurs, 10 to 8 Friday, 10 to 4:30 Sat-Sun and 10 to 9:30 on Dec 21 for the Lantern Festival. Please give Jeremy a call and use the BCSME Crew Schedule site to see where help is needed: <http://bcsme.ca/374/>

The Pavilion Volunteer hours are now 11 to 3 every day except holidays. Free parking is available at the Roundhouse and the Canada Line station (Yaletown/Roundhouse) is right across the street. One or two days a month would be a great help. You will meet and greet the locals and visitors from around the world. Many are Train Fans! You can also help our Railway Heritage Park and Tour Office by promoting their events with the visitors and locals. Come on down for a few hours or a day and see for yourself. Please call George @ 778-875-3573 for more information.



Merry Christmas and a Happy New Year from the 374 Crew! (G.G.)

### **Vancouver Christmas MiniRail**

As I write this the Christmas mini Rail has started operation. At this point in time WE NEED HELP, and probably still will when you read the Newsletter. If you have been planning to volunteer but have just not got around to it – Please don't put it off any longer!!!

The train will operate daily from December 4<sup>th</sup> to 23<sup>rd</sup> inclusive (Monday to Thursday 10am to 6pm, Friday 10am to 8pm and Weekends 10am to 4:30pm). The Roundhouse Community Centre is closed Dec 24 until Jan 2.

The Crew Schedule will be posted on the internet at <http://bcsme.ca/374/> so if you have internet access check the Schedule and you can see what shifts are still open on the day(s) you have available. As in past it is not possible for signups to be done online. To book shifts email me at [jeremy.davy@wcra.org](mailto:jeremy.davy@wcra.org) or call Donna – 604.484.2791 (has voicemail) and tell us what days/times you have available. I will attempt to have the schedule updated the morning following receipt of your information. If you do not have internet access let us know and I will phone you back to confirm your assignments.

**Even if you can are unable to volunteer you can still help** – Support the WCRA by bringing your friends to 374 and ride the train – only \$2.00 per rider.

Merry Christmas to all of you from Team MiniRail ... We hope to see many of you at the 374 Pavilion. (J.D.)

## **WEST COAST RAIL TOURS**

### **TOURS COMMITTEE 2016**

Interested in train travel? Join the West Coast Rails Tours Committee. We hold quarterly meetings to discuss the tours schedule. New ideas are encouraged. Contact Jennifer at the Hastings office and get involved.



**West Coast Rail Tours presents 20 exciting train journeys new for 2016! Here are just a few.** Go to [www.westcoastrailtours.com](http://www.westcoastrailtours.com) for a complete listing

### **Las Vegas & Grand Canyon Desert Railway**

Spend 6 days touring exciting Las Vegas including a tour of the Hoover Dam and lunch on the Lake Mead Paddlewheeler, Desert Princess. Tour the Grand Canyon on the Grand Canyon Railway and overnight at the Grand Canyon Railway hotel and experience a Wild West shoot-out. There is even time on your own to explore the shops and casinos at your leisure.

*April 11, 6 days (alternate dates available), from \$2,499 includes all tours and round-trip air.*

### **Canadian Rockies & Alaskan Cruise**

A journey of luxury and romance with 7 nights aboard the Nieuw Amsterdam Holland America cruise-ship, and touring the historic Alaskan towns of Ketchikan, Juneau, and Skagway as well as the majestic glaciers of Glacier Bay. Then back to Vancouver and board the Rocky Mountaineer train through the scenic Rockies to the mountain towns of Kamloops, Banff, Lake Louise and Calgary. This unique scenic tour includes many local sightseeing attractions and world-class hotels. *Cruising starts April 30 (14 days), from \$8,249.*

### **History and Beauty of Haida Gwaii**

Our most popular tour! This journey begins with a 5 day train tour through the Rockies to Jasper, Prince George and Prince Rupert, followed by a ferry to Skidegate and 3 full days touring Haida Gwaii. Our local guide is the Mayor of Masset, so will show you the Haida culture up close. Visit quaint villages, museums, remote beaches and rainforests – even experience an authentic native dance and feast.

*Because this 10-day trip is so popular we are running two departing May 3 and May 31. From \$2,799, includes many meals, all rail and transportation, airfare back to Vancouver, and door-to-door home pick-up and drop -off (within the lower mainland).*

### **Celebrity Solstice Alaska Cruise**

Join our escorted group cruise to Alaska in the comfortable luxury of the award winning Celebrity Solstice. This ship is one of the most beautiful and innovative cruise ships launched in the past decade. On board amenities include a 1,400+ capacity theatre, multiple dining options, the Patio on the Lawn, numerous bars and clubs, the Solstice Deck and the Lawn Club. We will visit Ketchikan, Tracy Arm Fiord, Juneau, Skagway and the Inside Passage. There is an option to extend your trip and stay on board another night, then disembark in Seattle for 2 nights, then take the train home.

*This magnificent boat boards May 6, (7 or 10 days), from \$1,540/person including tax, cruise, most meals and accommodation.*

### **Africa 2016 - Garratt's to Victoria Falls**

This trip of a lifetime includes Manchester's finest machinery and Matabele muscle combined to give you Africa's greatest steam event of 2016! Garratts thundering through the African bush, excellent runpast locations, on-train accommodation, magnificent scenery (including Victoria Falls) and great wildlife. Ride both the Class 14A and Class 15A locos as well as the Class 16A 2-8-2+2-8-2 Garratt. Sleep in the NRZ premier-class sleeper coaches and relax in a twin dining car/lounge. Visit Harare, followed by two days on the Mbalabala branch line and a daytime run from Bulawayo to Dete. All of the traditional Thomson Junction to Victoria Falls charters are included. This tour has also been approved by the National Railways of Zimbabwe and includes locomotives and rolling stock that are maintained within the revenue fleet, not in preservation.

*May 8, 12 days with an optional 4-day extension on the Choebe Wildlife Safari, from £1,780 includes all hotels and lodging, train accommodation, transfers, rail tickets and most meals.*

### **Scenic Trains of Switzerland & Italy**

This amazing trip includes some of the world's most picturesque rail lines through the mountains and on to some of Europe's most charming towns. Ride aboard three of the legendary Alpine railways: the GoldenPass Panoramic Train from Gstaad to Montreux; the Glacier Express from Zermatt to St. Moritz; the Bernina Pass Train, to Italy. Cruise across two of the most scenic lakes in the world, Lake Zurich and Lake Como. This is a train trip of a lifetime with so many photo opportunities and unique experiences.

*May 16 – 10 days from \$5,369 includes home pick-up/drop-off, many meals, all accommodation and return airfare.*

### **The Beauty of Japan by with 4-train rides.**

Ride 4 trains across the country to Kanazawa, Kyoto, Okayama and Osaka including 3 bullet-trains. Immerse yourself in Japanese culture as you visit famous and historic temples, gardens, and markets for a truly authentic experience of this stunning country.



*June 4, 13 days, from \$7,849 includes home pick-up/drop-off, many meals, all accommodation and return airfare.*

### **Medieval Sites & Trains of Central Europe & Transylvania**

Combining the romance of historic medieval settlements with the architectural splendor of some of Europe's most beautiful cities, this exclusive rail cruise through the diverse and dramatic landscapes of Southern Europe, promises to be truly unforgettable. Includes Istanbul, Bulgaria, Vienna, Austria, Slovakia, Krakow, Poland, Prague, Czech Republic, the Golden Eagle Danube Express train to Budapest, Hungary and a dinner cruise across the Danube.

*June 17, 14 days from \$10,195 USD*

### **Great Western Rail Adventure**

This unique journey lets you ride trains and see sights in a relaxing atmosphere and with an informed guide. Includes 7 train rides and visits to the Western Railway Museum, Sonoma Taintown Railroad, Napa Valley Wine Train, Sacramento River Train, California State Railroad Museum, Nevada County Narrow Gauge Railroad & Transportation Museum, Western Pacific Railroad Museum, Nevada State Railroad Museum, The Virginia & Truckee Railroad, Bodie & Benton Railway, Yosemite Mountain Sugar Pine Railroad.

*June 24, 8 days, from \$1,995/person USD includes 20 train rides, all accommodation, some meals and all attractions.*

### **British Heritage Steam Trains**

Explore the heritage steam railways of England and Scotland. Ride over 15 historic trains including 15 inch gauge, standard gauge, steam and diesel. This 2 week tour, starts in London

and travels across much of England before heading to the highlands of Scotland and back down to London again. Ride magnificently maintained preserved railways and visit many historic sites and museums. The tour uses a dedicated, private, air conditioned motor coach as travelling by road makes it possible to visit railways that are hard to connect by rail.

*June 25, 14 days, from £2,758, includes 13 nights accommodation in 3 or 4 star hotels, breakfast and either lunch or dinner every day, all activities, admissions and heritage trains*

### **Historic Trains & National Parks of Colorado & the Rockies**

In this busy, scenic, well-guided tour, ride 4 historic trains through the mountains: the Georgetown Loop Railroad to Devil's Gate high bridge, the Durango and Silverton narrow gauge railroad, Canon city's Royal Gorge Railroad, and Pike's Peak Cog Railway. Visit up to 7 National Parks: including Rocky Mountain National Park, Colorado National Monument, Mesa Verde National Park, San Juan National Forest and Rio Grande National Forest. Visit the National Monument, Garden of the Gods, wine country, Denver, Vale, Silverton and Colorado Springs. A rail-fan and photographers dream!

*July 16, 9 days, from \$3,529/person includes door to door pick-up and drop off, 12 meals, and return airfare.*

### **United Kingdom by Rail**

Venture by train to the three of Britain's most lively cities; From Edinburgh to York, and London. Stunning landscapes surround you as you are whisked through the peaceful countryside, rolling hills, emerald forests, sweeping coastlines. Tour Edinburgh castle, the Old Town Grassmarket and The Scottish Parliament. Travel to St. Andrew's and Pitlochry for Scottish whisky distillery tour. Scenic train through the Scottish Borders to Medieval York and tour York Minster, Castle Howard and Helmsley. Train to London and tour Trafalgar Square, St. Paul's Cathedral, Tower of London, Buckingham Palace, House of Parliament, Westminster Abbey and Big Ben.

*October 8, 10 days, from \$5,079/person includes door to door pick-up and drop-off, 12 meals, return airfare and all accommodation.*

Contact Jennifer Chisholm at West Coast Rail Tours, your train travel expert at [tours@wcra.org](mailto:tours@wcra.org) or 604-524-1011 (toll-free 1-800-722-1233) Or pop on by for a visit at Unit 2, 4529 Hastings St. Burnaby, BC V5C2K3 West Coast Rail Tours, [www.westcoastrailtours.com](http://www.westcoastrailtours.com)

## **FEATURE ARTICLES**

### **FROM THE STEAM CHEST - AUGUST 1958**

- By Craig McDowall

#### **Club News**

The club has acquired its first locomotive! The engine is a 13 ton, 36 inch gauge, 0-4-0T built by the Vulcan Iron Works in 1906 and used in a coal mine in Fernie, B.C. She has 30 inch



drivers, burns coal, has 9 x 14 cylinders and carries 140 pounds of boiler pressure. The previous owners were the Crows Nest Pass Mining Company's Elk River Colliery. The engine is #4 and has been named 'Fernie' by the club. The couplers are 'link and pin' and the front coupler is operated by a rope from the cab. Equipment included are its whistle, steam brakes, sanding bunkers but she doesn't have a bell, coal bunker or a headlight. The locomotive is presently stored in Vancouver. However, in the very near future she will be moved to a location where the club members can start restoring her to her original condition and by the spring of 1959 we hope to have the engine in operation on weekends and in daily operation in the summer.

On August 19th, three club members were off on an eight day vacation by train. Roger Burrows, Doug Cummings and Keith Anderson departed on Train #2 'The Canadian' to Calgary with three units on the head end: #1400, 1911 & 4425 and 16 coaches. A one hour delay occurred when Train #5 had engine trouble and had to trade a MLW road switcher for a GP-9 and time was not made up. A good example of how slow this train schedule can be is it took 20 minutes to go 5 miles east of Revelstoke on level track.

In Calgary the guys were surprised to hear of active steam still on the CNR with 2-8-0's and 2-8-2's on freight assignments and 4-6-2's on passenger trains. Pacifics #5140 & 5145 were being used on Trains #9 & 10 and 2-8-0 #2559 was being used on the 'every other day' way freight to Mirror AB. The next #2494 was being set up for the next run. It is interesting to note that #2559 was listed as 'dead' in Montreal but the engine was apparently converted to oil just recently and re-assigned to Alberta. Locomotive 2-8-0 #2751 is being kept as a spare at the Calgary roundhouse. And 2-8-2's #3562 & 3578 came in on freights from Hanna AB while we were hanging out shooting photos. RDC #D102 is currently being used on the Calgary-Edmonton run.

The CPR did not have any active steam in Calgary. The last operating steamer was in June. At Ogden Shops, CPR 4-6-2 #2442 was being repaired (new flues etc) for service in Eastern Canada. Stored, with some still serviceable, were two 0-8-0's, fifteen 2-8-0's, twenty six 2-8-2's, two 2-10-0's (#5760 & 5785), six 2-10-4's (#5930-5935), three 4-6-0's, eighteen 4-6-2's and four 4-6-4's (#2833, 2836, 2844 & 2864). And 2-8-0 #3601 was being scrapped. Engine #6921 (0-8-0) was the shop locomotive at Ogden until April of this year when it was replaced by diesel unit #14. This engine, as are many others we saw, were in exceedingly good shape. Interesting to note though that the 2-10-4's, while only nine years old, were in very bad shape in appearance. And the 4-6-4's are rusting which used to have highly polished silvery boilers.

On the return trip, Train #1 'The Canadian' was delayed four hours at MP 128 on the Laggan Sub (about 7 miles east of Field, B.C.) where a mud slide was being cleared. The train only made up 20 minutes of the lost time on its way to Vancouver. The trip was deemed a real success where only 3 of the many steamers photographed were sandwiched between cars etc.

Some had long grass around them but by climbing nearby tenders, optimal angles were achieved (MCM note: try that these days!)

### **The Royal Trains on the PGE and CPR**

The Pacific Great Eastern was the first railroad honoured with a Royal Train during the recent visit of Princess Margaret. The coaches included in the consist are unknown at this point, but we do know one of the engines used was #590 and two of the coaches were the 'Pavilion' and the 'Northern Summit'. All the cars and the engines were 'fresh' from the company shops and had a 'M' painted on the side of each car in scroll lettering.

The Canadian Pacific had the privilege of running their first Royal Train in seven years on Saturday, July 27th. All the cars and engines used on this train had been run through their Angus Shops and had been rebuilt and repainted. For the first time a stainless steel Dome Car was used on a Royal Train. The consist was seven cars: baggage car #3016, Diner 'Princess', sleeper 'Amhearst Manor', sleeper 'Chateau Richelieu', dome car 'Skyline 508', open platform observation car 'Mount Stephen' and open platform car 'Strathcona' (the private car of the Governor General). The train stopped at Kamloops, Salmon Arm, Revelstoke, Golden, Field, Banff (where the Princess stayed for two days) and then on to Calgary. The train then left for the east after The Princess disembarked. Power on the train were FP-9 units #1433 & 1434 which were converted from 4000 series engines in 1954/55. This, of course, was the first time any Royal Train in Canada had been pulled by diesels.

### **Steam & Where to Find It (within reasonable distance)**

#### ***In BC:***

- Canadian Collieries has one 4-6-0 working from Cumberland to Union Bay on Vancouver Island
- Denton Lumber Co. and Eastern & Westcox Lumber in Prince George have 10 steamers combined

#### ***In Oregon***

- Klamath & Northern has one 2-6-2 currently running

#### ***In Idaho:***

- Washington, Idaho & Montana has one 2-8-0 and one 4-6-0 in operation

### **A QUICK TRIP TO ITALY—PART TWO**

- story and photos by **Don Evans**

Having had a pretty full day yesterday, we decided to spend Tuesday, November 10 just strolling around Rome. We also put our Metro three day passes to good use. Metro trains on the two subway lines (A and B, with Line C under construction) can be very busy. The eight car heavy metro type trains are jam packed during business days, and you certainly won't fall over being held in place by the crush. However it is a very efficient system and we made

good use of it. Outside of rush hours are the times to travel.

Walking the highlights of Rome made for a pleasant morning; we visited the Spanish Steps, Trevi Fountain, the Pantheon, a couple of coffee shops for that great Italian coffee and more. We also paused for some tram rides—a good way when the feet got tired to recoup—and they allowed us to see other parts of the city. A long ride the length of the #14 line on a older style tram was fun.



Wednesday, November 11—off again, this time the goal was Pompeii. Once again we started off on the Trenitalia Frecciasrossa to Napoli, this time with a bit of a twist. When we got to our assigned carriage, we couldn't find row 3. After some looking, we discovered rows three and four were in a private room—we had the whole thing to ourselves for the trip (Photo on page three last issue). What a ride that was to Napoli! Once again we changed there to the narrow gauge Circumvesuviana and it was about 30 minutes to Pompeii.

Pompeii was simply amazing—to see the ruins (and restoration) of a complete city that had been buried under five meters of volcanic dust and debris way back in AD 79, and to walk those streets today is an experience hard to describe. The site was massive—it literally is a complete city, wiped out in a single natural event. No photo can do it justice—it is a place to be experienced. We spent all day, so the planned time to wander around Naples a bit did not materialize. We boarded a late afternoon train back to Rome.



Thursday, November 12—our last full day in Rome, so again we decided to walk and enjoy the city. We hit other areas today, the gorgeous San Giovanni Cathedral, a walk along the river with views to the Vatican, several tram rides, and outdoor lunch at Copolo Square, and then a lovely walk through the gardens and park around Villa Borghesi. Of course—there were more tram rides! We wrapped our day with a ride on another narrow gauge electric line, this one right in Rome that operated with three car vintage sets.



Friday our quick visit was over, and we headed for Rome airport and our flights back home—a short, but very fun time away—and over 300 images to show for it!

## **RAILWAY NEWS**

### **Recipe for "Caboose Coffee":**

Take several fistfuls of ground coffee and toss them into a tall enamel coffee pot; fill with cold water. Let stand unheated for a couple of hours (maybe even overnight). Bring to a boil several minutes before you're ready to serve. Pour and drink or pour through a strainer/cheesecloth if you don't want grounds in your cup. Not for the timid. (R.C.)

### **LAST TRAIN IN KELOWNA**

CN started pulling their track out of Kelowna on November 13th. CN train 908 with single unit CN SD60 5449 and a short rail train, only accommodating 600 foot rail lengths, backed into Kelowna, and began to pull up rail.



The starting point was not at the end of the line, rather at Hardy Street in Kelowna which is about 2 miles from the waterfront. This was because CN had removed the Hardy Street crossing in the Summer of 2014.

It was remarkable to see a CN train back in Kelowna, after a 15 year absence. The line had been operated by the Kelowna Pacific Railway since 2000, and had not been used at all since the Kelowna Pacific went bankrupt in July, 2013. This year was the 90th anniversary of the railway in Kelowna. The last spike was driven in Kelowna in September, 1925. (C.D.)



**Visit Our  
New Location  
Just 83' West of  
our Old Location  
2825 Grandview Hwy in Vancouver**

**CENTRAL HOBBIES**

**Your One Stop Scale Model Train Shop on the West Coast**

2825 Grandview Hwy., Vancouver, British Columbia V5M 2E1

(604) 431-0771 Fax (604) 431-9855 ORDERS (888) 7trains (787-2467)

Web Site: [www.central-hobbies.com](http://www.central-hobbies.com)



*We also stock a  
large selection of  
books and magazines!  
Open Daily at 11 a.m.  
Monday thru Saturday*

**CREDIT LINES**

**ISSN 1204-072**

**Vol. 56 Issue 1**

Editor

Don Evans

Distribution

Jeremy Davy & Donna Simon

**Contributors:**

J.C. Jennifer Chisholm  
C.D. Corwin Doeksen  
G. G. George Game  
D. S. Donna Simon

R.C. Ryan Cruickshank  
J.D. Jeremy Davy  
D. L. Dale Laird

Send contributions to the WCRA PO Box, direct to the editor at #28 - 2133 St. Georges Ave., North Vancouver, B.C. V7L 3K5, on the Internet to <[news@wcra.org](mailto:news@wcra.org)>, phone news to (604)988-3435(res) or fax to (604) 986-7660. Check us out on the Internet at <[www.wcra.org](http://www.wcra.org)>

**Contact us: Tours 604-524-1011 / 800-722-1233 Heritage Park 604-898-9336 Office 604-681-4403  
CN Roundhouse & Conference Centre 604-898-1082  
[www.wcra.org](http://www.wcra.org)**

**BACK COVER**

The Polar Express makes a nice scene early in the morning as it prepares for its first trip of the day, CPR FP7A #4069 positively glows in the morning darkness. Later in the day, the engineer notches up the locomotive as it accelerates north with its eight car train. (Photos by Christian Vazzaz).

**TRIVIA ANSWER**

The book written in 1936 by *Lionel Toy Trains'* Sales Manager **Arthur Raphael**, has several toy train references - In the book, a brother and sister, *Dicky and Betty*, are transported first by kite and then by a giant bird to a land where toys grow on trees. "One very big tree was outstanding", he wrote, "It was absolutely covered with electric trains, all kinds and all colors, it took Dicky's breathe away".



**CANADIAN COUNCIL  
FOR  
RAILWAY HERITAGE**

WCRA News acknowledges the financial assistance of the Province of British Columbia



Bank. Trust. Insurance. Wealth Management.



## Business banking is about a shared perspective.

Being headquartered in the West has its advantages. We understand your industry and make timely decisions, locally. As a bank focused on entrepreneurs, we partner with you to find the solutions perfectly suited to your business financial needs. Learn more at [cwbank.com](http://cwbank.com)

Proud supporters of West Coast Railway Heritage Park!

Park Place branch  
100 - 666 Burrard Street  
P: 604.688.8711

Dean Chan  
Sr. Mgr. Commercial Banking  
C: 778.875.0593

[cwbank.com](http://cwbank.com)



*A CIBC Group Company*





**Published monthly by West Coast Railway Association**  
**PO Box 2790 Stn. Term., Vancouver, B.C., V6B 3X2**  
**[www.wcra.org](http://www.wcra.org)**

**ISSN 1204-072X**  
**Vol. 56 Issue 1**

**Canada Post, Canadian Publications Mail Sales Product Agreement #40007853**