



WCRA NEWS

FEBRUARY 2016

**HOW MANY WAYS CAN
YOU TURN A LOCO?**

THOMAS COMING IN MAY



GENERAL MEETING

The **General Meeting** of the WCRA will be held on **Tuesday, January 26 at 1930 hours** at Rainbow Creek Station, corner of Willingdon and Penzance in Burnaby.

Entertainment will be announced at the meeting.

ON THE COVER

A winter postcard shot by **Ken Storey** shows the CP Holiday Train dropping down from Crowsnest Pass near Fabro on December 13, 2015. The Holiday Train made its usual trek across Canada, ending at Port Moody and tying up its run in Port Coquitlam before Christmas. The train supports Canada's Food Banks all along its route.

FEBRUARY CALENDAR

- **West Coast Railway Heritage Park open daily 1000 through 1600k**—Roundhouse and grounds open only on weekdays, admission by donation. Regular operation on weekends.
- Friday, February 5 —Deadline for items for the March 2016 WCRA News
- Tuesday, February 23 —**WCRA General Meeting**, Rainbow Creek Station, 1930 hours

EDITORIAL

YOUR INPUT IS NEEDED

Welcome to 2016—another year gets underway. To all of you who have supported the WCRA over the past year, our sincere thanks and appreciation. The year 2016 will be another year of growth, change, challenge and accomplishment for WCRA and we hope that you will again take part in whatever way is right for you, in our many events and activities.

The West Coast Railway Association is an historical group dedicated to the preservation of British Columbia railway history. Membership is open to all people with an interest in railways past and present. We are a non-profit British Columbia society, registered as a Canadian charity. Membership prices are as follows, **Please note that GST must be added to all fees:**

Senior \$50 (\$52.50), Individual \$55 (57.75), Family \$65 (68.25) **E Members (electronic newsletter only) are \$35 (\$36.75) Senior, \$40 (\$42.00) individual and \$50 (\$52.50) family.** Other categories are:

- Junior Member (age 18 and under) \$ 30 (\$31.50)
- Sustaining Member \$100 (tax receipt) **plus** membership type regular fee
- Life Membership \$700 (\$735) individual life / \$1,200 (\$1,260) family life

All memberships include the monthly newsletter, Heritage Park admission (except Special Events), mini rail rides and discounts on food and merchandise. The Association holds a monthly meeting on the last Tuesday of the month at 1930 hours in Burnaby at Rainbow Creek Station in Confederation Park. Apply through www.wcra.org or mail to WCRA, PO Box 2790 Stn. Term., Vancouver, B.C., V6B 3X2.

Our specific request for you right now is that you increase your help to us here at WCRA News. As your editor continues to slide further away from the day to day activities (in the interest of succession) I am less and less in the actual operations that take place around our organization. And so, there is an increased need for me to hear from you if WCRA News is to continue to be as content rich as it has been in the past. Please send me your reports—just pieces of information are fine—call me, e mail me, text me, Facebook report, cards and letters—no matter what the media, any information is always appreciated.

WCRA News has a fabulous record of continuous monthly editions for over 50 years. With your help we will keep this going in the spirit of sharing interesting information and informing members and others about the rail events and happenings in our area.

Don

ASSOCIATION NEWS

FROM THE DECEMBER GENERAL MEETING

- **Chair Bill Johnston** called the meeting to order with 20 members and guests present:
- Executive reports were unavailable as Ken Tanner and Gord Bell were not in attendance.
- **Bill Johnston** read a report from Don Evans noting that fundraising was showing a good trend in December. The report continued that Polar Express had a good run this year with 12,600 Guests hosted on 4 weekends. The 8 car consist (#4069, MacDonald Creek, 6 operating coaches plus Alberta) ran flawlessly. Thanks to the crew that, after the last guest left the Park at 17:30 on Dec 20, took down all the Christmas decor and converted the Roundhouse into a wedding venue by 01:00 the next morning (Wedding was at 11:00). An amazing feat!
- **Bill Johnston**, on behalf of the Board, advised that a nominating meeting for WCRA Board Members would be held at the January Meeting. There is one position to be filled this year as **Don Evans** is not continuing on the Board. There also three Community Director positions (2 Vancouver – 1 Squamish) that will be filled by board appointment.
- **Bill Marchant** reported briefly on the 960 project – the four battery strings have been reinstalled in their boxes on the deck. **Bob Gordon** has been custom fitting the side panels.
- **Bill Johnston** requested input from the members regarding location and pricing of future Annual Dinners. Several comments were received from the floor and Bill suggested that a formal survey would be the most appropriate method to gather input.
- **George Game** noted that the 374 Pavilion is the site of the WCRA Christmas Train. **Jeremy Davy** commented business has been steady and is running about 10% ahead of last year.
- **Bill Johnston** noted that a 2016 Tours Brochure was in the plans.

- **Dave Emmington** confirmed that the Bob Booth Estate will be holding a Train Flea Market and Auction on Jan 10th 2pm to 4pm in North Vancouver.
- **Bob Hunter** advised that the Booth Estate has donated a large collection of Maps and Blueprints to WCRA. He also advised that the Vancouver Ship Society was dissolving.
- The events calendar was reviewed.
- **Ryan Cruickshank** gave a short Trackside Report followed by a Show & Tell of *Royal Hudson* Memorabilia from the 1970's which included a *Royal Hudson* Poster, a Christmas Card, several Post Cards and brochures, and an Aug'74 menu from the Club Car *Brandywine Falls*. Ryan donated the items to the Heritage Park for the Hudson Exhibit.
- **Bill Marchant** followed with his Trackside Report.
- **Eric Anderson** presented some Canadian Tire money for the Park.
- A minute of silence was observed for late member **John Keith-King**.
- Entertainment was a video *Queen of the Rails* about the Durand (MI) Union Station, its history and restoration.

NEW MEMBERS

We welcome to membership.....

- James Barton and family of West Vancouver;
- Barb Clark and family of Brackendale;
- Rebecca Cremin of Surrey;
- Andrea Faerberboeck and family of Squamish;
- Kathy Forbes - Clothier of Surrey;
- Alan Gatzke of Oyama;
- Alissa Kristiansen and family of Garibaldi Highlands;
- Albert Malenstyn of Surrey;
- Jeanine Marshall of Langley;
- Asa McKee and family of Squamish;
- Kat Seipmann and family of Garibaldi Highlands;
- Kate Spazier and family of Squamish;
- Lisa Tuningley of Surrey;
- Michael & Daphne Urban and family of Garibaldi Highlands;
- Anthony Weir and family of Vancouver.

Welcome back to:

- Jane & Daren Clark and family of Squamish;
- David Davies of Burnaby

(J.D.)

MEMBER NEWS

Congratulations to WCRA's President Emeritus **Don Evans** on being named a recipient of the Governor General of Canada's "Caring Canadian Award". The award will be presented at a ceremony in Vancouver in March.

Our very best wishes to **Bonnie Game** who broke a bone in her foot on the very last ride of the Polar Express on December 20. She reports that all is on the mend, but that having to use crutches has not been fun!

PLEASE RENEW YOUR MEMBERSHIP....If your label reads 12/31/2015 then you need to renew, if it reads 09/30/2015 then this is your last issue. Please renew!

WCRA TRIVIA #325 - By Ryan Cruickshank

What is the oldest named train in the United States still operating?

(Answer on page 26)

VOLUNTEER HOURS REPORTING - Reminder

As part of the supporting information provided when seeking funding from other organizations the WCRA relies heavily on the hours that our volunteers generously donate while carrying out the activities of the Association.

Everything you do for WCRA counts - except attending General meetings ... Volunteering at the Heritage Park or as Custodian at the 374 Pavilion, Serving on a committee or as a Tour Host, attending board meetings or working on Association related projects at home; — all hours are important and all hours count.

WCRA is required to report Volunteer hours given annually at the Heritage Park to the BC Safety Authority and to include them in the Park's Safety Management System statistics. As a minimum - Please separate your hours into **Time spent at the PARK** and **OTHER** when you report them. Please submit volunteer hours for 2015 as soon as you can as they need to be included in the Annual Report.

Let **Donna Simon** know the time you have donated. You may do so by email to **membership@wcra.org** or by calling 604.815.0812 (604-484-2791 toll free from Vancouver calling area) – both phones have voicemail. If you prefer to send your information by snail mail you can address it to Donna at PO Box 2535 Garibaldi Highlands BC V0N 1T0.

VOLUNTEER ACTIVITIES - Mileage

Don't forget that all mileage incurred while doing the Volunteer activities you report are eligible for a Tax Receipt by way of a Cheque Swap. Unsure how to do this? For assistance contact Jeremy at **membership@wcra.org**, or calling either of the numbers above. (D.S.)

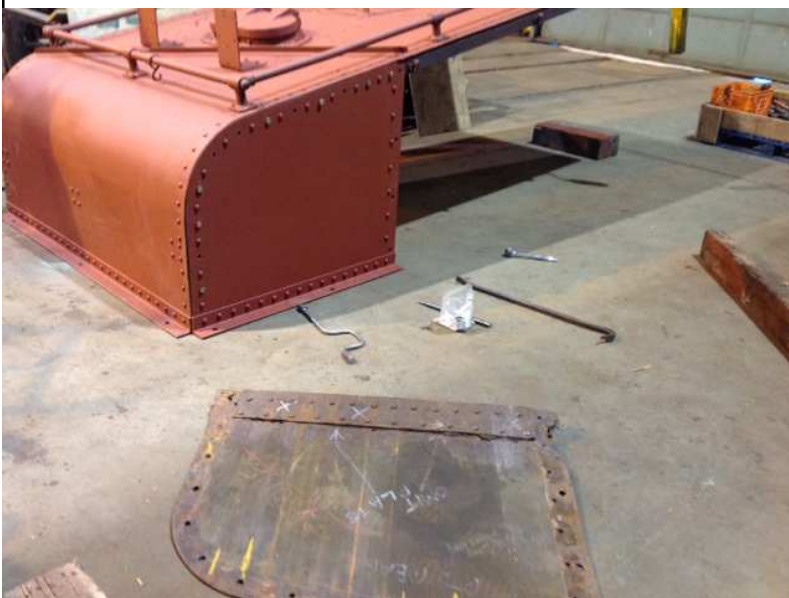
COLLECTION

BCER 960 REPORT

Ok 960 fans, here's a brief update from the three amigos (Bob, Bill and Mike) this cold winter up in snow bound MP2.

First, the often discussed 4 battery banks, which were fully serviced and affixed into their refurbished cradles, are finally now in the two large battery boxes situated up on 960's back deck. Rear air reservoir tank fittings and respective piping are all in place leaving only a small amount of electrical rear deck wiring to attend to, before the trial fitting of the rear hood with its two nose side plates affixed. Needle gunning to remove much rust and old paint from the four original hood's side drop doors is underway, tedious work, but these 'slightly' battered pieces will look great when finished.

Roy, and his team at **Roman Metal**, (photo right) are on the home stretch completing fabrication of the remaining side panels for both the hoods, so we will also have hopefully started some fitting of these pieces to at least the rear hood and deck early February.



Peter at **Fraser Wood** has now accumulated enough cab flooring material and this awaits its turn to be planed into original spec tongue and groove.

We do look forward to some warmer times to better facilitate the required painting of our steel work, but also too, a little more warmth will help for applying our new BCER decal lettering.

Bob, Bill and myself hope you had a wonderful holiday season, and of course if you are into it, we wish you lots of successful restoration in 2016. (M. McG.)

BRAKES MAKE A DIFFERENCE

The rebuild of the braking system in FP7A #4069 along with the valve rebuilds and system re-certifications on all the coaches of the operating train made a noticeable difference during Polar Express. Prior to Polar operations, the locomotive received a full COT&S and thorough inspection, and was re-qualified for mainline service. Thanks to our mechanical team led by **Robert MacBeth** and **Trevor**, and to **David Walmsley** for his assistance. The locomotive and the trainset ran flawlessly for all eight days of Polar Express operations.

Thanks to:

- The **Canada Post Heritage Club** for donation of a Kodak 850H Slide Projector and 6 Trays;
- **Ryan Cruickshank** for donation of 1970 era Royal Hudson memorabilia for the Hudson Display.

WEST COAST RAILWAY HERITAGE PARK

Home of the Royal Hudson



POLAR EXPRESS SETS NEW RECORDS

It was a record setting Polar Express for us in 2015, as more than 12,600 guests rode the train and enjoyed the North Pole. The Polar Express operated 35 trips this year, with locomotive #4069 and an eight car consist. More guests than ever came in their pajamas or housecoats, adding to their experience. Local hotels and restaurants did a roaring business on Polar Express weekends. The North Pole added new attractions, and just imagine how Santa and Mrs. Clause's knees were by the end of it all! Thanks to our many volunteers for all the hard work that you did this year—our guests were delighted with the event and can't wait to come back again next year.

DAY OUT WITH THOMAS PLANS BEING SET

Watch the WCRA website or Facebook page for an announcement that **Day Out With Thomas** tickets will start sales. We expect to open them for sales by the end of January, and this year's events will take place on weekends in May (dates to be confirmed shortly). Our goal is to leverage off our success with Polar Express and generate another record family event this year—with additional train capacity and more dates of operation. Expect tickets to sell fast once they are open. Make plans now to visit Thomas with your family in May of 2016.

SNOW BLANKETS SITE

A good dump of snow after Christmas left the West Coast Railway Heritage Park covered in the wet white for some time. While Vancouver escaped, and the mountains rejoiced, the temperature was just that three or four degrees cooler in Squamish resulting in very limited operations through January.

LIONS CLUB SUPPORTS HERITAGE PARK

Our thanks to the **Lions Club of Squamish** for their presentation of a cheque in the amount of \$600 to help the Heritage Park. The Lions Club have been strong supporters at the site for many years and we appreciate all they do. (G.B.)

Photo—Lion **Nelson Winterburn** presents cheque to Gord Bell alongside the Royal Hudson

TRANSFORMATION AFTER POLAR

It was, on all accounts, a major transformation at the CN Roundhouse & Conference Centre following the last run of Polar Express on Sunday, December 20. The final guests left the North Pole at about 5:30PM, and work got underway to take it all down and set up for a wedding the very next morning!

Not only decorations, but the mini rail tracks and train had to be removed, all structures (Santa's stage, sleigh, mini rail tunnel and more) had to be disassembled, the place cleaned and then reset.

At 5:30—the large crew of staff and volunteers were all ready! And away they went. By midnight, the roundhouse was empty and spotless, and by 2AM it was all done. The business car *Alberta* had been moved in on Track 5 (still melting snow off its roof!), the ceremony stage and chairs were all set on the Track 6 area, and the banquet tables and set up for the reception were all in place on Tracks 3 and 4. The bride had even been in decorating while the set up was going on!

The wedding on Monday morning, December 21 was a great success! Our hearty thanks to everyone who helped make this all happen! (G.B.)



TRACK UPGRADES COMPLETE

Our thanks to our maintenance crew and to **PNR Railworks** for their completion of track upgrades in November. These were undertaken as a routine part of our regular track inspection, which had showed some areas in need to maintenance. Several ties were replaced and alignment and levelling work was done at both the Heritage Park and the MP 2 yard tracks. Thanks also to **T-Rail Products** for the donation of track spikes and parts to help with the project. (G.B.)

CONTAINER ADDED FOR BANQUET STORAGE

A shipping container has been purchased and located on the north side of the CN Roundhouse & Conference Centre to provide badly needed storage for banquet tables and chairs. The good news is that we have acquired more of these items than originally anticipated, the bad news is we needed more storage space. The result is good, as we don't need to rely on rentals for most events now held at the Roundhouse.

ROYAL HUDSON 2860

ROYAL HUDSON FUNDRAISER

Thank you to all who have supported our Royal Hudson fundraiser to date. We have raised \$18,256 for this to the end of November and it is never too late to make a contribution. These funds will be used to bring steam expert Scott Lindsay to BC in early 2016 and start work on the detailed plan for the next phase of the restoration of locomotive 2860. We are bound and determined to have the Royal Hudson steam for future generations. Remember that donations of \$250 or more receive a framed art rendering of the 2860's builders plate.

FUNDRAISING

PLANNED GIVING—LEAVE A LEGACY GIFT

Have you considered a future gift to the WCRA in your will? This is an easy way to make sure that organizations you love and wish to have ongoing success are looked after in the future. It also generates a major tax savings for your estate and takes just a few minutes to arrange.

Simply put, Planned Giving is about planning for a future gift to WCRA. The ability to make such a gift is based solely on the assets that you have available to be directed to someone or some organization when the time comes. You can only choose to leave your estate (value) to three places—to others (eg. family), to charity (such as WCRA or other causes you support),

or to the government. **The choice is yours to make!**

WCRA has a Planned Giving package that we would be happy to send out or discuss at your request, as well as access to independent advisors if you wish to discuss this with someone. Call Don at 604-988-3435 for more information.

PROJECTS FUNDRAISING

Current Project Specific Fundraisers and where we are.....your support is always welcome.

- **FP9A #6520**—thanks to your support, we have made 6520 operational, and she received her COT&S in November. Still ahead, the cosmetic part—much body work and a new paint job. It would be great to see her complete in shiny new paint in the classic CN 1950's passenger paint scheme.
- **Roundhouse Paving**—we raised about 2/3 of funds needed, still need another \$4,500 to complete—on hold for now pending further funding.
- **Semaphore**—as you have read, we have acquired a heritage semaphore signal and want to install it as a working unit at the Heritage Park. We need just \$2,500 for this—the first \$1,500 has been committed.

FUNDRAISING UPDATE—no end of year update as we are waiting donations listings from staff—will update next month.

374 PAVILION

Our Visitor Count for the month of December was 3,940. We had 85 more visitors than last year. The 2015 Year End Visitor Count was 47,040. This is up 2,790 from last year. Every year sees an increase in visitors. We are a very popular place with locals and tourists.

December was a busy month at the Pavilion with the MiniRail operating from 10 until 6 most days. Jeremy will report on the rider count in a separate article. Thanks to everyone who helped operate the MiniRail and staff the Pavilion. **Gordon Hall's** Christmas themed model railway deserves special thanks. The kids and many adults enjoyed the setup. Our next job will be taking down the MiniRail and putting the Pavilion back in order. This is much easier then setting it up. Christmas decorations also have to be removed and stored.

Thanks to **John Riley** for a new N-Gauge CN Locomotive for our model railway display at the Pavilion. The kids love this model display and sometimes get very upset when the parents or nannies try to leave. We are located on the corner of Davie St and Pacific Blvd. Please drop in for a visit with our Volunteers and learn a little history.

This brings us to our usual call for volunteers. We will be down by two volunteers for the next few months due to vacations and other factors. Anyone who can give us a hand would be appreciated.



Photos show loco 374 in Kitsilano Park in the 1950's (above) and in the Pavilion today

The 374 Pavilion Winter hours are 11 to 3 every day except holidays. Free parking is available at the Roundhouse and the Canada Line station (Yaletown/Roundhouse) is right across the street. One or two days a month would be a great help. You will meet and greet the locals and visitors from around the world. Many are Train Fans! You can also help the Railway Heritage Park and Tour Office by promoting our events with the visitors and locals. Come on down for a few hours or a day and see for yourself. If you like to meet people you will love this job. Call George @ 778-875-3573 for more information. (G.G.)



VANCOUVER CHRISTMAS TRAIN 2015

The Christmas Train was once again at the 374 Pavilion this year enthusiastically operating with an augmented Portable MiniRail Crew.

The train was set up Nov 26th and 27th. The Pavilion and Engine 374 were decorated by the 374 Crew and ready for our visitors by the first week of December. Again this year **Gordon Hall** (in his *spare time?* away from his Polar Express layout) erected a Model Railway display adding to the enjoyment of our younger guests..

Although rides were given the previous day, Operations officially started on December 4th and ran till Dec 23rd when the Roundhouse Community Centre closed for their Christmas Break. Operations resumed after New Year on an informal basis with rides being offered starting Jan 2nd.

Although the 374 Pavilion does not have high traffic volume, all in all it was a rewarding time for all involved, Guests and Volunteers alike. Again ... **Thanks Team!!!!**

As I write this the train is still at the Pavilion and whenever there is a qualified engineer on duty rides are being given. As soon as the weather finally cooperates we will tackle the task of moving the various parts to their summer homes. Hopefully the job will be complete by the middle of the month.

Thanks again to all the volunteers many of whom performed multiple roles over the period: **Karl Anderson; Keith Anderson; Frank Barnhouse; Len Brown; Jeremy Davy; Dave Emmington; Don Evans; Bonnie Game; George Game; Cathy Grant; Ed Harkness; Gordon Hall; Bill Johnston; Sylvia Johnston; Adam Lelacheur; John Lighthall; Bill Mellors; Craig McDowall; Colin Rae; Peter Reid; Jim Saunders; Rob Stead; Orin Webber and David Wheeler.** It was a pleasure to work with all of you. (J.D.)

WEST COAST RAIL TOURS

TOURS COMMITTEE 2016

Interested in train travel? Join the West Coast Rails Tours Committee. We hold quarterly meetings to discuss the tours schedule. New ideas are encouraged. Contact Jennifer at the Hastings office 604-524-1011 and get involved.



PLAN FOR A RAIL ADVENTURE IN 2016

Start planning your next train vacation now with West Coast Rail Tours. Here are some of our organized tours. Go to www.westcoastrailtours.com for a complete listing or contact Rail Travel Expert, Jennifer Chisholm at tours@wcra.org or 604-524-1011 for your travel needs.

White Pass & Yukon Steam Spectacular

There is no other railroad quite like the White Pass & Yukon Route. Against all odds, the iron trail was carved through some of the North's most rugged terrain in 1898. This engineering wonder climbs nearly 3,000 feet in 26 miles of steep grades and cliff-hanging turns. This extraordinary group tour includes rides on the famous Bennett Scenic Journey and Fraser Meadows Steam Train, tour of the Copperbelt Railway & Mining Museum and Frantic Follies vaudeville show. A dream trip for any rail-fan or historian! *"This is one of the greatest trips I have ever been on in my entire life!" Peggy Murray, 2014 passenger.* June 7, 5 days, from \$1,799 includes many meals, roundtrip airfare, all rail and transportation, and door-to-door home pick-up and drop-off (within the lower mainland).



For those who have always wanted to explore North on the Alaska Railroad, **NEW THIS YEAR** we are adding two Alaska Railroad extensions on top of the White Pass & Yukon tour! Choose one of the following options for a train trip of a lifetime!

Option 1: NORTHERN DENALI JOURNEY – WHITEHORSE TO ANCHORAGE

This 4 day Alaska extension travels coach Whitehorse to Dawson City and Dawson City to Fairbanks then the Alaska Railroad from Fairbanks to Anchorage, fly home to Vancouver. June 11, 4 days from \$1,599 (not including the White Pass journey)

Option 2: SOUTHERN GLACIER DISCOVERY JOURNEY – ANCHORAGE

TO WHITTIER AND SEWARD

This Alaska extension travels the same route as the Northern Denali Journey tour from Whitehorse to Anchorage, and Dawson City to Anchorage (via Fairbanks), but ALSO includes day trains from Anchorage to Whittier and Anchorage to Seward then flying back to Vancouver. June 11, 8 days from \$2,999 (not including the White Pass journey)



History and Beauty of Haida Gwaii

Our most popular tour! This guided group tour begins with a 5 day train journey through the Rockies to Jasper, Prince George and Prince Rupert, followed by a ferry to Skidegate and 3 full days touring Haida Gwaii. Our local guide is the Mayor of Massett, so will show you many of the secrets and hidden gems of the area.

Visit quaint villages, museums, and remote beaches, you will even experience a private authentic native dance and feast.

Because this 10-day trip is so popular we are running two in 2016, departing May 3 and May 31. From \$2,799, includes many meals, all rail and transportation, airfare back to Vancouver, and door-to-door home pick-up and drop-off (within the lower mainland).

EARLY BOOKING IS HIGHLY RECOMMENDED! Because only small tour buses can access some locations only 15 guest per tour!

Las Vegas & Grand Canyon Railway

Spend 6 days touring exciting Las Vegas including a tour of the Hoover Dam and lunch on the Lake Mead Paddlewheeler, Desert Princess. Tour the Grand Canyon on the Grand Canyon Railway and overnight at the Grand Canyon Railway hotel and experience a Wild West shoot-out. There is even time on your own to explore the shops and casinos at your leisure. A perfect way to explore the excitement of Vegas and the Nevada desert. April 11, 6 days (alternate dates also available), from \$2,499 includes all tours and round-trip airfare.

Alaska Cruise of a Lifetime - on the world-famous Celebrity Solstice

Join our fully-escorted group and cruise to Alaska in the comfortable luxury of the award-winning Celebrity Solstice. See the spectacular Inside Passage and Tracy Arm Fiord, and visit Ketchikan, Juneau, and Skagway. This ship is one of the most beautiful and innovative cruise ships launched in the past decade. On board amenities include a 1,400+ capacity theatre, multiple dining options, the Patio on the Lawn, numerous bars and clubs, the Solstice Deck and the Lawn Club. There is an option to extend your trip and stay on board another night, then disembark in Seattle for 2 nights, then take the train home. This magnificent ship boards May 6, (7 or 10 days), from \$1,540/person including tax, cruise, most meals and accommodation.

Scenic Trains of Switzerland & Italy

This amazing trip includes some of the world's most picturesque rail lines through the mountains and on to some of Europe's most charming towns. Ride aboard three of the legendary Alpine railways: the GoldenPass Panoramic Train from Gstaad to Montreux; the Glacier Express from Zermatt to St. Moritz; the Bernina Pass Train, to Italy. Cruise across two of the most scenic lakes in the world, Lake Zurich and Lake Como. This is a train trip of a lifetime with so many photo opportunities and unique experiences.

May 16 – 10 days from \$5,369 includes home pick-up/drop-off, many meals, all train passes, all accommodation at 4* hotels, and return airfare.

The Beauty of Japan by with 4-train rides.

This fully guided tour includes 4 train rides across the country to Kanazawa, Kyoto, Okayama and Osaka including 3 bullet-trains. Immerse yourself in Japanese culture as you visit private tours of famous and historic temples, gardens, and markets for a truly authentic experience of this stunning country.

June 4, 13 days, from \$7,849 includes home pick-up/drop-off, many meals, all accommodation and return airfare.

Medieval Sites & Trains of Central Europe & Transylvania

Combining the romance of historic medieval settlements with the architectural splendor of some of Europe's most beautiful cities, this exclusive rail cruise through the diverse and dramatic landscapes of Southern Europe, promises to be truly unforgettable. Includes Istanbul, Bulgaria, Vienna, Austria, Slovakia, Krakow, Poland, Prague, Czech Republic, the

Golden Eagle Danube Express train to Budapest, Hungary and a dinner cruise across the Danube. June 17, 14 days from \$10,195 USD

Historic Trains & National Parks of Colorado & the Rockies

In this jam-packed, scenic, well-guided tour, ride 4 of Colorado's most historic trains through the mountains: the Georgetown Loop Railroad to Devil's Gate high bridge, the Durango and Silverton narrow gauge railroad, Canon city's Royal Gorge Railroad, and Pike's Peak Cog Railway. Visit up to 7 National Parks: including Rocky Mountain National Park, Colorado National Monument, Mesa Verde National Park, San Juan National Forest and Rio Grande National Forest. Tour wine country, Denver, Vale, Silverton and Colorado Springs. There is so much to do and see!

July 16, 9 days, from \$3,529/person includes door to door pick-up and drop off, many meals, and return airfare.

Great Western U.S.A. Rail Adventure

This unique journey lets you ride trains and see sights in a relaxing atmosphere and an informed guide. Visit historic museums and ride 20 legendary trains including the Western Railway Museum, Sonoma Traintown Railroad, Napa Valley Wine Train, Sacramento River Train, California State Railroad Museum, Nevada County Narrow Gauge Railroad & Transportation Museum, Western Pacific Railroad Museum, Nevada State Railroad Museum, The Virginia & Truckee Railroad, Bodie & Benton Railway, Yosemite Mountain Sugar Pine Railroad.

June 24, 8 days, from \$1,995/person USD includes 20 train rides, all accommodation, some meals and all attractions.

British Heritage Steam Trains

Explore the heritage steam railways of England and Scotland. Ride over 15 historic trains including 15 inch gauge, standard gauge, steam and diesel. This 2 week tour, starts in London and travels across much of England before heading to the highlands of Scotland and back down to London again. Ride magnificently maintained and preserved railways and tour many historic sites and museums. The tour uses a dedicated, private, air conditioned motor coach as travelling by road makes it possible to visit railways that are hard to connect by rail.

June 25, 14 days, from £2,758, includes 13 night's accommodation in 3 or 4 star hotels, breakfast and either lunch or dinner every day, all activities, admissions and heritage train tickets

Africa 2016 - Garratt's to Victoria Falls

This trip of a lifetime includes Manchester's finest machinery and Matabele muscle to give you Africa's greatest steam event of 2016! Garratts thundering through the African bush, excellent run-past locations, on-train accommodation, magnificent scenery (including Victoria Falls) and great wildlife. Ride both the Class 14A and Class 15A locos as well as the Class

16A 2-8-2+2-8-2 Garratt. Sleep in the NRZ premier-class sleeper coaches and relax in a twin dining car/lounge. Visit Harare, followed by two days on the Mbalabala branch line and a daytime run from Bulawayo to Dete. All of the traditional Thomson Junction to Victoria Falls charters are included. This tour has also been approved by the National Railways of Zimbabwe and includes locomotives and rolling stock that are maintained within the revenue fleet, not in preservation.

May 8, 12 days with an optional 4-day extension at the Choebe Wildlife Safari, from £1,780 includes all hotels and lodging, train accommodation, transfers, rail tickets and most meals.

Contact Jennifer Chisholm at West Coast Rail Tours, your train travel expert at tours@wcra.org or 604-524-1011 (toll-free 1-800-722-1233) to answer any of your questions regarding train travel. Or pop by the Tours office for a visit at Unit 2, 4529 Hastings St. Burnaby, BC V5C 2K3 West Coast Rail Tours, www.westcoastrailtours.com

FEATURE ARTICLES

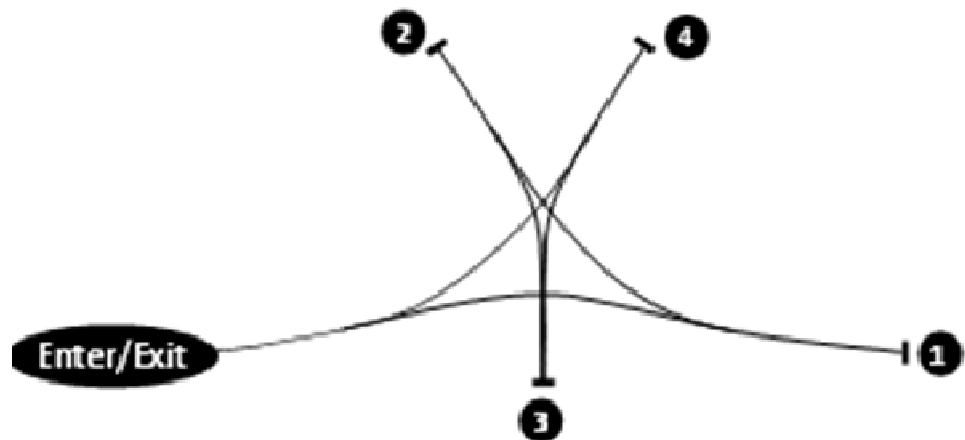
HOW MANY WAYS CAN YOU TURN A LOCOMOTIVE

- by John Day

If you've been around trains for a while, you are probably thinking that my question is a cinch, obviously there are three ways to turn a locomotive (without using a crane or what modelers call GHA "Giant Hand Action" to physically lift and turn an engine). Right in our own Heritage Park we have an example of a turntable, wyes are used to turn whole trains, such as at the passenger station in Vancouver, and turning loops, though uncommon, do exist: there used to be one that ran around the roundhouse at False Creek.

So, the answer is "three", right? *Wrong.* Have you ever heard of a "turning star"? No?

Neither had I until an overseas friend sent me photos and details of one in Carbonia, Sardinia, Italy. At first it looks like an interlaced wye, but it is best described as a "five point turn" – similar to the ones you see executed by new drivers daily on the streets of Vancouver! It is easier to explain with a diagram. The locomotive enters the layout from the

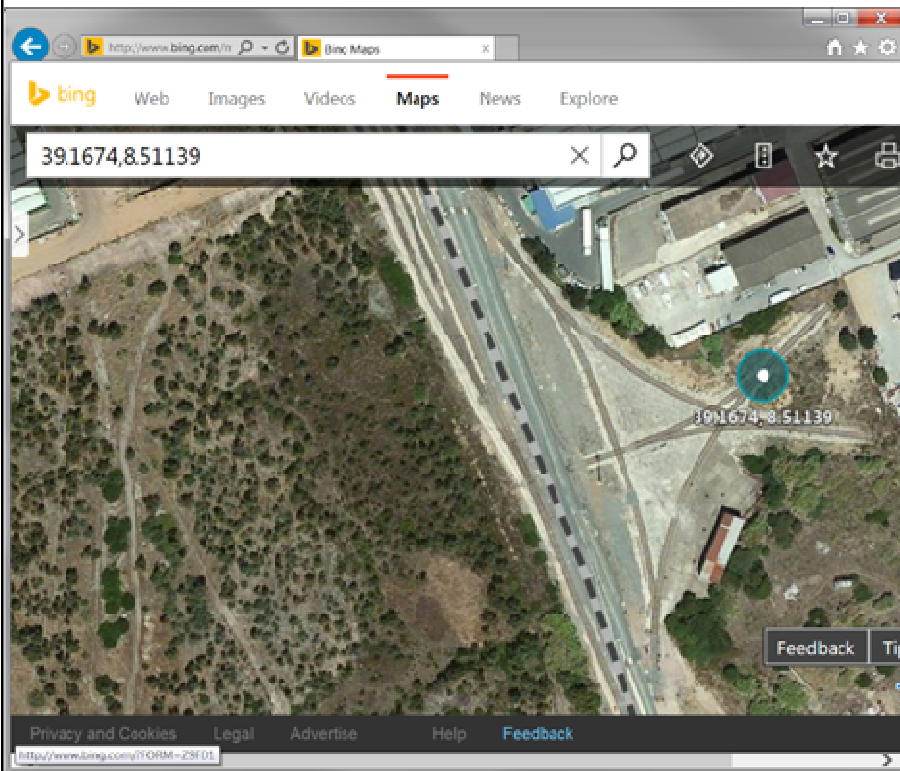


Turning star ("Gleisfünfeck") schematic diagram

entrance point at the left, and proceeds in turn to all the numbered locations, eventually emerging, facing the other way, at the entrance point. Note that all the track switches are spring switches, so that no crew member is needed on the ground to assist with this move. The space occupied by a conventional “wye” would require much more room, with the tail track extending far beyond the top of the diagram between points 2 and 4. And the track layout can either be more compact, or use broader curves, than a conventional wye due to the overlapping design. Compared to a turntable, which is more compact, there is less maintenance, capital and manpower required.

You would be forgiven for thinking this arrangement is a peculiar anachronism from the Victorian Age of railways, but one of the two remaining examples, at Carbonia, Sardinia (Italy), is on a line that was only built in 1956, so it is really quite a modern feature.

If you try to look up “turning star” on Google or other search engines, you may get lucky and find the only English language discussion I could find, and that was on a modeler’s discussion group. But if you research the German term, “Gleisfünfeck”, and use a translator, you will find a fairly good article on Wikipedia. This article gives the locations, including map references, for the two remaining, and two abandoned, turning stars in Italy that can all be viewed using the satellite view on various search engines. While I normally use Google maps, I have found that Bing maps offer better views in some cases.



To view these locations, enter the latitude and longitude coordinates, in decimal format, in Bing or Google maps, and select “Aerial” or “Birds Eye” views in Bing, or “Earth” views in Google. Switch back and forth to get the best view. The coordinates are as follows:

Carbonia, Sardinia 39.1674 (N)
8.51139 (E)

Mals/Malles Venosta on the Val
Venosta Railway in the South
Tyrol 46.6835 (N) 10.5473 (E)

Both of the above are still in use
for special movements, usually
chartered steam trains.

Oristano, Sardinia (abandoned)

39.9023 (N) 8.6061 (E) and San Candido, Italy (abandoned) 46.7308 (N) 12.2707 (E)

Just enter the coordinates without the bracketed letters, separate North and East coordinates by

a comma. You may have to look around a bit before the star will be revealed. And now you know, there are four ways to turn a locomotive.

FROM WCRA'S PAST

A bit of a shift this month from our usual reprint from a long past newsletter. Thanks to **Dave Emmington** for providing some photos of WCRA equipment and activities from the past.....



Canadian National Railways business car Pacific is all frosty after arrival at Jasper on a WCRA tour back in January 1963 (Peter Cox photo, collection of M. Perry) The drumhead reads....."West Coast Railfan Association—Winter Tour Party".

The *Pacific* has a very interesting history and is well known by our **David Walmsley**, who led its restoration and conversion to its use today for Mother Parker's Coffee and the company's charitable work. (work included HEP, structural reinforcing, rebuilt trucks, brakes, wheels and bearings). Built by Canadian Car & Foundry in September 1924, the business car carried line # 4444 and was used in special service as part of the Royal Train in 1939. It remained in service as a sleeper / buffet / observation car and operated as CN 1197 into the 1970's. (Obviously WCRA chartered the car in 1963!) It was sold to private interests in 1976. The *Pacific* remains serviceable today and often operates in Ontario for its owners.



CPR Open observation car #597 on a WCRA excursion in 1962—in 1964 WCRA purchased this and sister cars 598 and 599, then selling numbers 597 / 599 but keeping 598—today's Henry Pickering.



Dave notes.....I came across this image of the *British Columbia* taken by J.W Booth in 1986 at New Westminster. When the BC came back from Vancouver Island there was very serious damage and the end was weather cracked. I spent many hours preparing a matching filler and sanding the surface to its former glory, before applying several coats of varnish. (Ed note—at this time the entire car exterior was varnished mahogany.....at some point it was then painted CPR Tuscan red and the varnished exterior was lost.). The car was exhibited at Steam Expo in 1986—its first real off site exhibition.)

RAILWAY NEWS



UNUSAL MOTIVE POWER FOR CASCADES

Amtrak Cascades train 510 on January 10 arrived with unusual motive power in the form of shiny BNSF GE ES44AC #6288.



MOTIVE POWER

Former BC Rail units seem to be making frequent appearances out here—a matched pair of GE Dash 8-40CM's was on a westbound train at Jasper January 15.

The delivery of the 39 new ET44AC units (3000 to 3038) from GE has been completed and all are in service. (BL)

CHRISTMAS TRAIN

CN had a “Christmas Train” again this year for employees in the Edmonton area, (and Winnipeg as well)...the train operated evening trips on the Sangudo sub as far as St. Albert and then reversed back to Walker yard. It was \$10 a ride (to charity) and each seat had a bag of candy. The locomotives were decorated with Christmas lights. Consist was CN SD75I #5755 / CN E9AR #103 (for head end power), leased VIA coaches 8118, 8116, 8139, 8144, flat car JTTX 157090 and caboose 77014 (work service caboose). (J.M.)

FIRST RESPONDERS GET CN MOBILE APP

More than 1,500 First Responders have signed up for the AskRail mobile app which allows them access to real time information as to loads a rail car is carrying. Only emergency responders are allowed access to this app, which is designed so that they can make quick decisions knowing what materials are involved should an emergency situation arise. (J.M.)



HOLIDAY TRAIN CONSIST

The CP Holiday trains (both Canada and US routings) made their way across the continent again in December 2015 (see cover photo). Consist of the Canadian train was GP20ECO #2323, CP decorated boxcars 220305, 220009, 220592, 220219, 220127, 220300, 220458, 220508, “stage car” 42901, and CP Business cars 101 Dominion, 84 Banffshire, 71 Killarney and 77 Van Horne. (J.M.)

SD40F'S TO CENTRAL MAINE & QUEBEC

Several SD40-2F units (affectionately known as “Red Barns” have been sold to the Central Maine & Quebec Railway—CP #'s 9004, 9010, 9011, 9014, 9017 and 9020-9024. (BL)

MORE SD30C-ECO'S COMING

Another 30 surplus SD40-2 units are now being delivered from Mexico after being rebuilt by Bombardier into SD30C-ECO units—they will become CP 5020 to 5049 on the roster. (TJ)



CABOOSE TO VANCOUVER ISLAND

SRY has shipped caboose A 5 to Vancouver Island. It travelled across the water on January 13. Not sure what it will be used for over there.



CONSISTS

It was a busy holiday season for VIA Rail Canada. The pre- Christmas consist of *The Canadian* expanded to summer like train lengths, with a three unit / 24 car train departing as VIA #2 on December 18 with F40PH-2's 6449 / 6426 / 6425, baggage car 8615, coaches 8123 / 8137, skyline 8511, Manor class sleepers 8334 / 8327 / 8325 / 8340, skyline 8506, diner 8409, Manor sleepers 8335 / 8315 / 8305 / 8317 / 8341 / 8310, skyline 8500, diner 8413, Manor sleepers 8337 / 8336 / 8338, Prestige class sleepers 88210 / 88207 and observation car 99710. (J.M.)

First 2016 departure of *The Canadian* #2 was on January 1, 2016—with a consist of F40PH-2's 6438 / 6431, baggage 8615, coaches 8123 / 8137, Skyline 8500, Sleeper Cornwall Manor, diner Louise, sleepers Osler Manor, Monck Manor, Rogers Manor, Prestige sleeper Chateay Jolliet and observation car Laurentide Park.

The first 2016 arrival of *The Canadian* #1 arrived at 5PM on January 2 (7.5 hours late) with F40PH-2's 6425 / 6416, deadhead coach 8140, baggage 8613, coaches 8135 / 8142, skyline dome 8516, sleepers Franklin Manor, Cameron Manor, Sherwood Manor, diner Palliser, sleepers Butler Manor, Bliss Manor, Draper Manor, Prestige sleeper Chateau Maisonneuve, and observation car Glacier Park.

The last *Skeena* to depart Jasper in 2015 was on December 30 with F40PH-2 #6412, coach 8125 and observation car Waterton Park. The same train became the first 2016 arrival at Jasper on January 2, 2016 at 1830. (Terry)

VIA ACQUIRES BROCKVILLE SUB

VIA Rail announced on November 23 that it has acquired the Brockville Subdivision, consisting of 45 kilometres (28 miles) of single track between Smiths Falls and Brockville. “This acquisition will strengthen our rail network dedicated to passenger trains in the Ottawa region, where VIA Rail owns more than 200 kilometres (140 miles) of track”, said Yves Desjardins-Siciliano. “With recent improvements in the region and ownership of the track from Ottawa to Brockville, we are well positioned to improve our reliability and our on-time performance going into and out of Ottawa”.

Over the last few years, VIA Rail has invested some \$20 million in capital to improve safety on the Brockville Subdivision with the introduction of a Centralized Traffic Control system for train movements. This investment has also improved the reliability and flexibility of service with the addition of two new sidings for train meets. These infrastructure changes permitted the addition of two round trips to the daily schedule, allowed for higher speeds and improved trip times. In addition, curve alignments were adjusted to support increased speeds, public crossings were upgraded and security fencing was installed for safety. (TJ)

ONTARIO IMPROVEMENTS

VIA Rail announced on November 15 service improvements into and out of Toronto.

The following changes came into effect in the last week of October:

- Train 40, between Toronto – Kingston – Ottawa now operates daily. (This train used to operate from Friday to Monday.)
- Train 45, between Ottawa – Kingston – Toronto, now operates daily. (This train used to operate from Friday to Monday.)
- Train 70, between Windsor – London – Toronto, now operates from Monday to Saturday. (This train used to operate from Monday to Friday.)
- Train 75, between Toronto – London – Windsor, now operates daily from Sunday to Friday. (This train used to operate from Sunday to Thursday.)

Additionally, to meet demand in Southwestern Ontario, trains 82 and 83, between Toronto and London, will now each have an additional 68-seat Economy car and 44-seat Business class car. (TJ)

New Business class breakfast, lunch and dinner menus have been introduced and several changes have been made to increase passenger satisfaction, including the doubling of the number of menus from four to eight. “These many service improvements were introduced quickly following suggestions from customers and employees. In many ways, they account for the increase in ridership and revenue VIA Rail has been experiencing over the last year, says VIA.

OTHER NEWS

SECOND TP56 UNIT HEADING HERE

The second TP56 industrial switching unit was heading west from Pittsburgh in early January. The prototype unit was built in the WCRA's Squamish shop by Tractive



Power Corp before production was moved to the Eastern US and became part of Curry Rail Services. The prototype unit now switches a grain industry in Cloverdale, while the second unit—FWDX 0002 is coming to Kinder Morgan Terminals on the North Vancouver waterfront. (C.V.) (photo shows prototype TP 56 while testing at the Heritage Park)

**Visit Our
New Location
Just 83' West of
our Old Location
2825 Grandview Hwy in Vancouver**

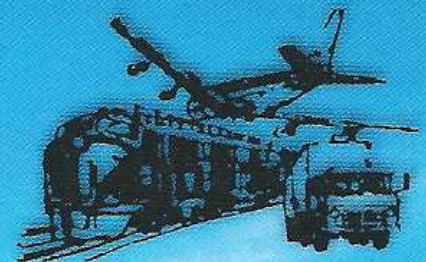
CENTRAL HOBBIES

Your One Stop Scale Model Train Shop on the West Coast

2825 Grandview Hwy., Vancouver, British Columbia V5M 2E1

(604) 431-0771 Fax (604) 431-9855 ORDERS (888) 7trains (787-2467)

Web Site: www.central-hobbies.com



*We also stock a
large selection of
books and magazines!
Open Daily at 11 a.m.
Monday thru Saturday*

CREDIT LINES

ISSN 1204-072

Vol. 56 Issue 2

Editor Don Evans
Distribution Jeremy Davy & Donna Simon

Contributors:

G.B.	Gordon Bell	J.C.	Jennifer Chisholm
J.D.	Jeremy Davy	G. G.	George Game
J.M.	Jim McPherson	M. McG.	Mike McGaw
D. S.	Donna Simon	C.V.	Christian Vazzaz

BL Branchline TJ Tempo Jr.

Send contributions to the WCRA PO Box, direct to the editor at #28 - 2133 St. Georges Ave., North Vancouver, B.C. V7L 3K5, on the Internet to <news@wcra.org>, phone news to (604)988-3435(res) or fax to (604) 986-7660. Check us out on the Internet at <www.wcra.org>

**Contact us: Tours 604-524-1011 / 800-722-1233 Heritage Park 604-898-9336 Office 604-681-4403
CN Roundhouse & Conference Centre 604-898-1082
www.wcra.org**

BACK COVER

Christian Vazzaz captured these images of the 2015 Polar Express train—top, the wonderful warmth of the newly restored coaches WCXX 5569 and 3218 await passengers to board for the next departure of the Polar Express, and below, the surprise of a snowfall greets the first run of Saturday, December 19 as the train heads north on the Heritage Park’s tracks to switch onto the CN line for the run out to Squamish Terminals.

TRIVIA ANSWER

The "Sunset Limited" has been in service since November 1894 although it was originally called "The Sunset Express". This route was the first transcontinental passenger route in the U.S. to be operated by a single company. In 1993 Amtrak extended the route eastward to the Atlantic Ocean, but Hurricane Katrina cut that route in Louisiana on 28Aug2005. The train now runs from Los Angeles to New Orleans only.



**CANADIAN COUNCIL
FOR
RAILWAY HERITAGE**

WCRA News acknowledges the financial assistance of the Province of British Columbia



Bank Trust Insurance Wealth Management



Business banking is about a shared perspective.

Being headquartered in the West has its advantages. We understand your industry and make timely decisions, locally. As a bank focused on entrepreneurs, we partner with you to find the solutions perfectly suited to your business financial needs. Learn more at cwbank.com

Proud supporters of West Coast Railway Heritage Park!

Park Place branch
100 - 666 Burrard Street
P: 604.688.8711

Dean Chan
Sr. Mgt. Commercial Banking
C: 778.875.0593

cwbank.com



A CWS Group Company



Published monthly by West Coast Railway Association
PO Box 2790 Stn. Term., Vancouver, B.C., V6B 3X2
www.wcra.org

ISSN 1204-072X
Vol. 56 Issue 2

Canada Post, Canadian Publications Mail Sales Product Agreement #40007853